

RayWhite[®]

TOUMA TAYLOR



Tightly Held Home Within Prized Cul-De-Sac

60 Kepos Street, Redfern

2 bed 1 bath

Sold



GROUND LEVEL



PLANS SHOWN ONLY INDICATIVE OF LAYOUT. DIMENSIONS ARE APPROXIMATE.
Ref. No: 96446

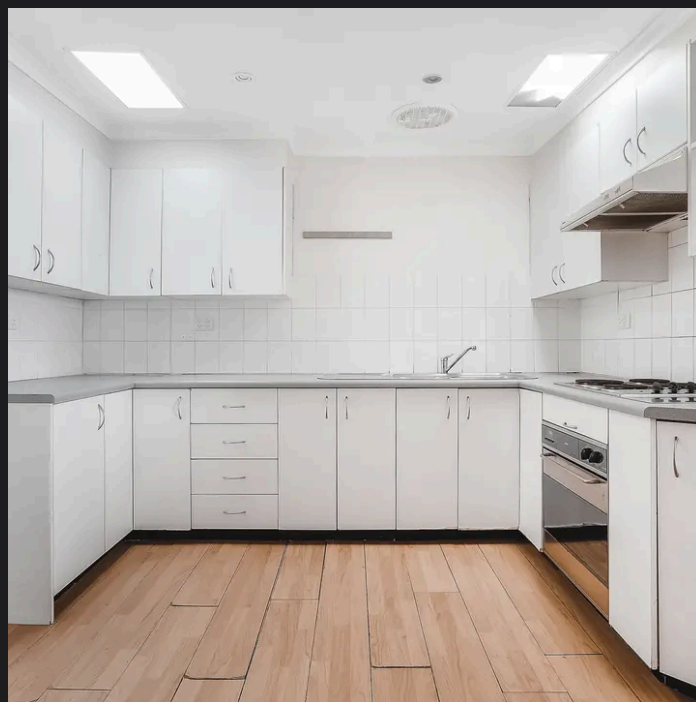


Land Size - 112sqm



60 KEPOS STREET

REDFERN



Charles Touma 0425 305 455
charles.touma@raywhite.com

Cadan Hickey 0404 206 240
cadan_hickey@raywhite.com

Disclaimer: All information provided is sourced from what we believe to be reliable sources. However, we do not guarantee its accuracy, and interested parties should conduct their own enquiries. Scale in metres. Indicative only. Dimensions are approximate.