

RayWhite®

TOUMA TAYLOR

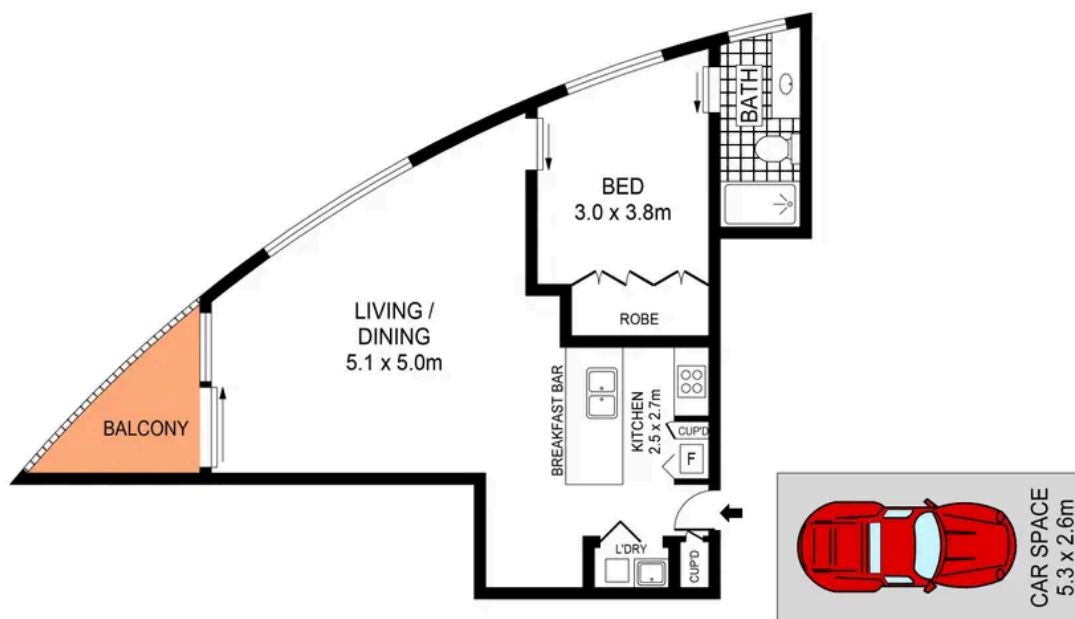


Stylish City Hideaway in the Premier Ivy Building

606/417 Bourke Street, Surry Hills

1 bed 1 bath 1 car

Sold



0 1 2 3 4 5 SCALE (METRES)

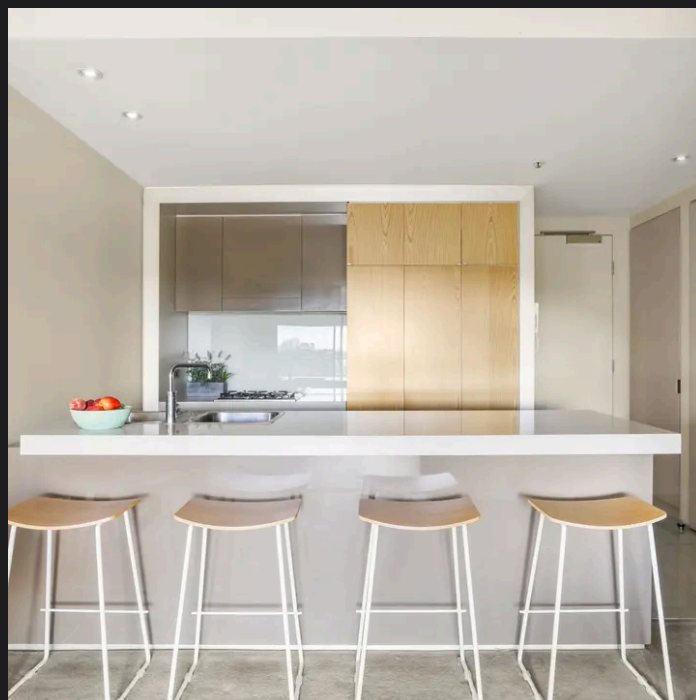
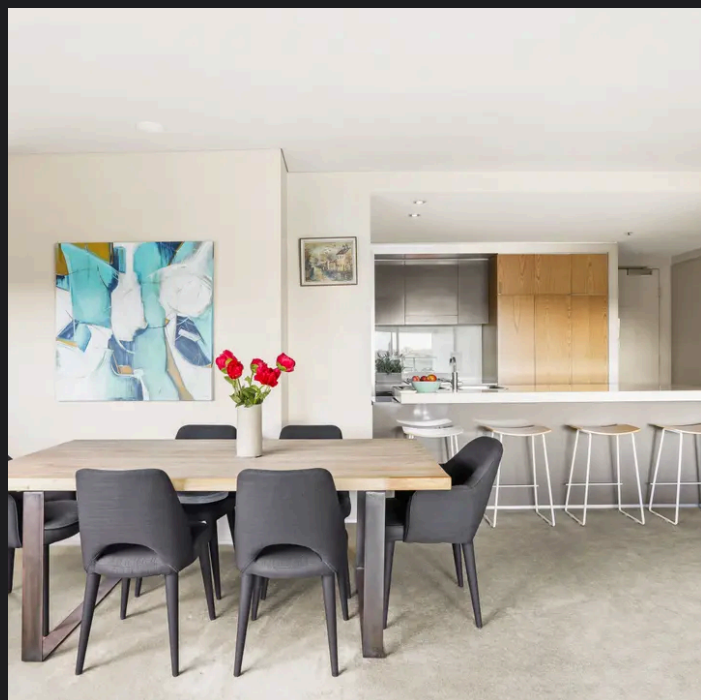
PLANS SHOWN ONLY INDICATIVE OF LAYOUT. DIMENSIONS ARE APPROXIMATE.
Ref. No: 106710

TOTAL SIZE: 76m²



606/417-419 BOURKE STREET

SURRY HILLS



Hayden Richards 0414 872 784
hayden.richards@raywhite.com

Charles Tuma 0425 305 455
charles.tuma@raywhite.com

Disclaimer: All information provided is sourced from what we believe to be reliable sources. However, we do not guarantee its accuracy, and interested parties should conduct their own enquiries. Scale in metres. Indicative only. Dimensions are approximate.