

RayWhite®

TOUMA TAYLOR

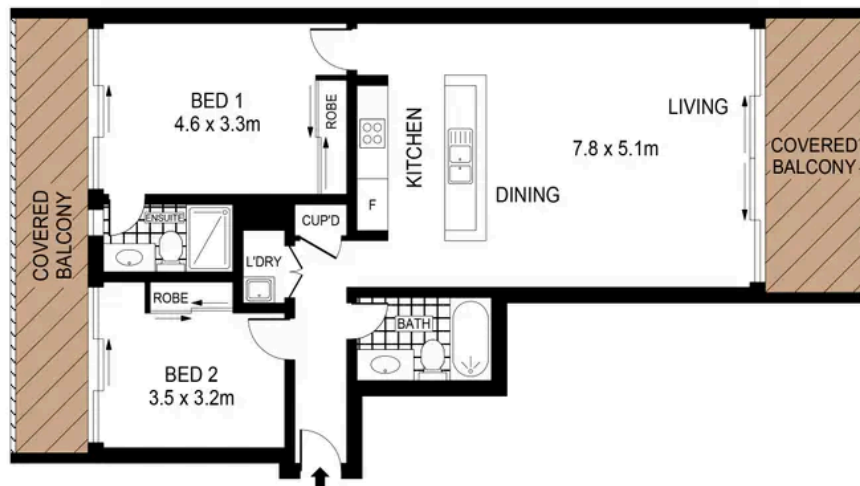


**Stylish N/Facing Abode in The Prized
'Glasshouse Apartments'**

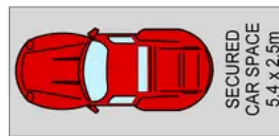
6/1-11 Murray Street, Waterloo

2 bed 2 bath 1 car

Sold



LEVEL TWO



BASEMENT

0 1 2 3 4 5
SCALE (METRES)

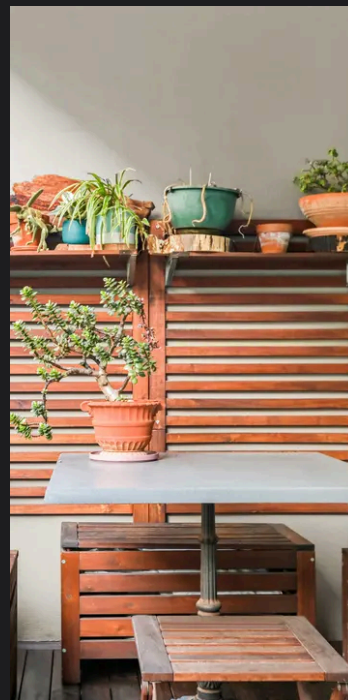
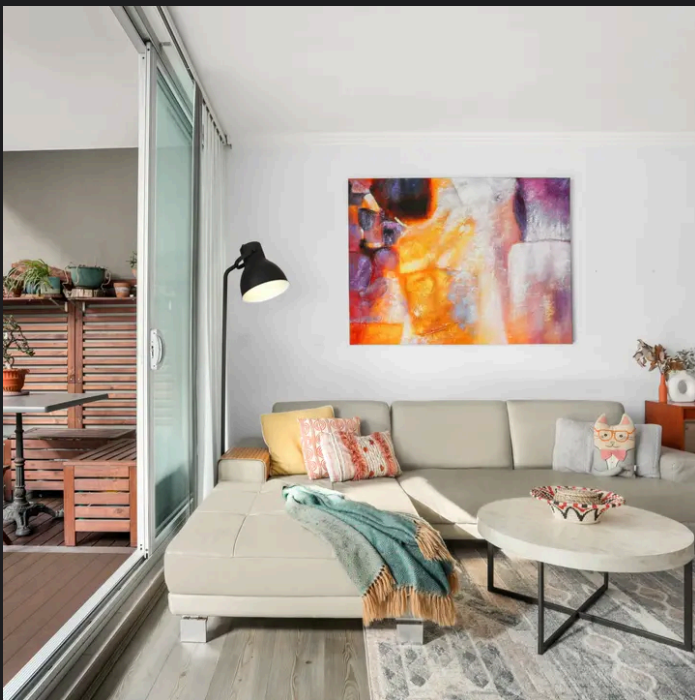
PLANS SHOWN ONLY INDICATIVE OF LAYOUT. DIMENSIONS ARE APPROXIMATE.
Ref. No: 103943

APPROX. UNIT SIZE: 108m²
APPROX. CAR SPACE: 14m²



6/1-11 MURRAY STREET

WATERLOO



Hayden Richards 0414 872 784
hayden.richards@raywhite.com

Disclaimer: All information provided is sourced from what we believe to be reliable sources. However, we do not guarantee its accuracy, and interested parties should conduct their own enquiries. Scale in metres. Indicative only. Dimensions are approximate.