

# RayWhite®

TOUMA TAYLOR



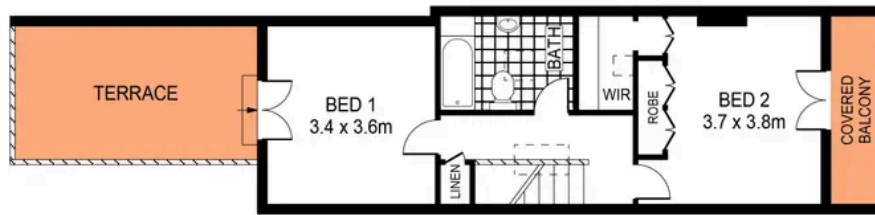
**Classic Terrace of Space & Flexibility on  
Sunny Corner Block**

61 Young Street, Redfern

2 bed 2 bath

**Sold**

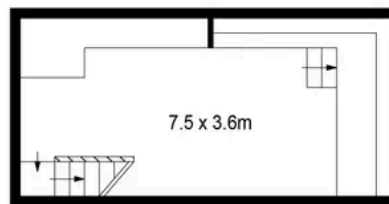




FIRST FLOOR



GROUND FLOOR



BASEMENT

0 1 2 3 4 5  
SCALE (METRES)

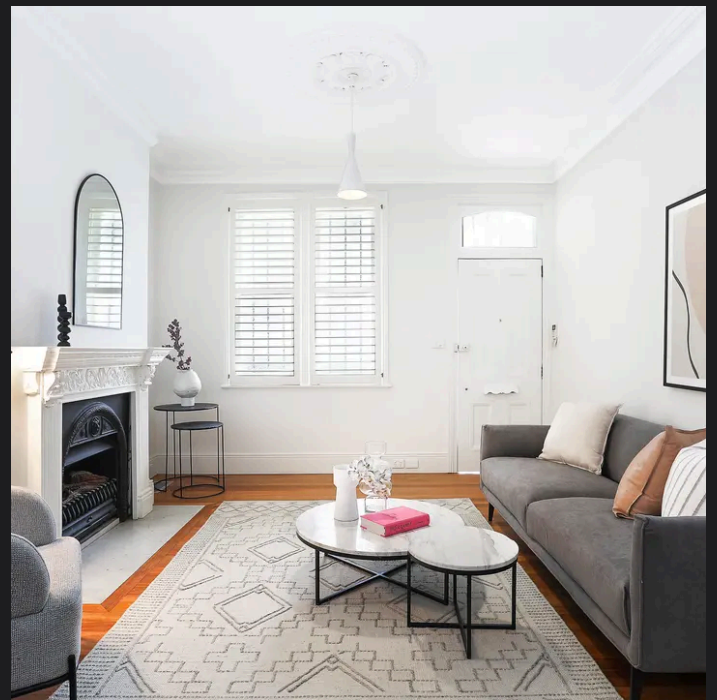
PLANS SHOWN ONLY INDICATIVE OF LAYOUT. DIMENSIONS ARE APPROXIMATE.  
Ref. No: 94526



LAND : 101SQM

61 YOUNG STREET

REDFERN



**Charles Tuma 0425 305 455**  
charles.tuma@raywhite.com

**Hayden Richards 0414 872 784**  
hayden.richards@raywhite.com

**Disclaimer:** All information provided is sourced from what we believe to be reliable sources. However, we do not guarantee its accuracy, and interested parties should conduct their own enquiries. Scale in metres. Indicative only. Dimensions are approximate.