

RayWhite[®]

TOUMA TAYLOR

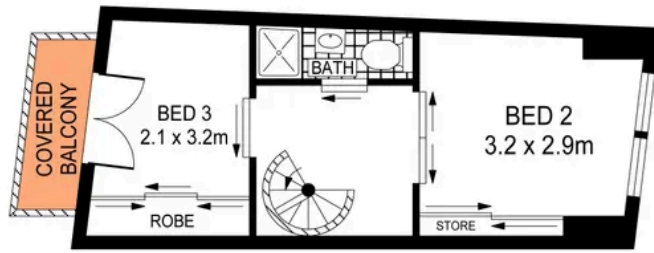


Completely Rebuilt From The Ground Up

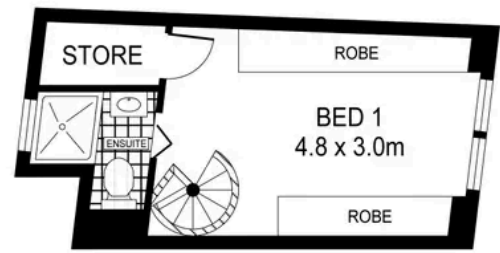
62 Hugo Street, Redfern

3 bed 2 bath

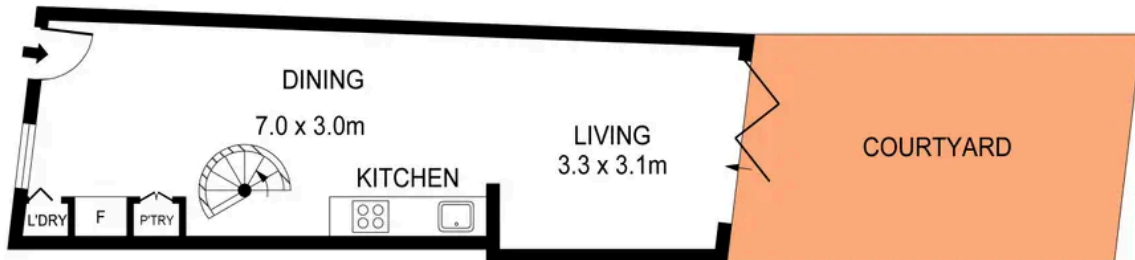
Sold



FIRST FLOOR



SECOND FLOOR



GROUND FLOOR

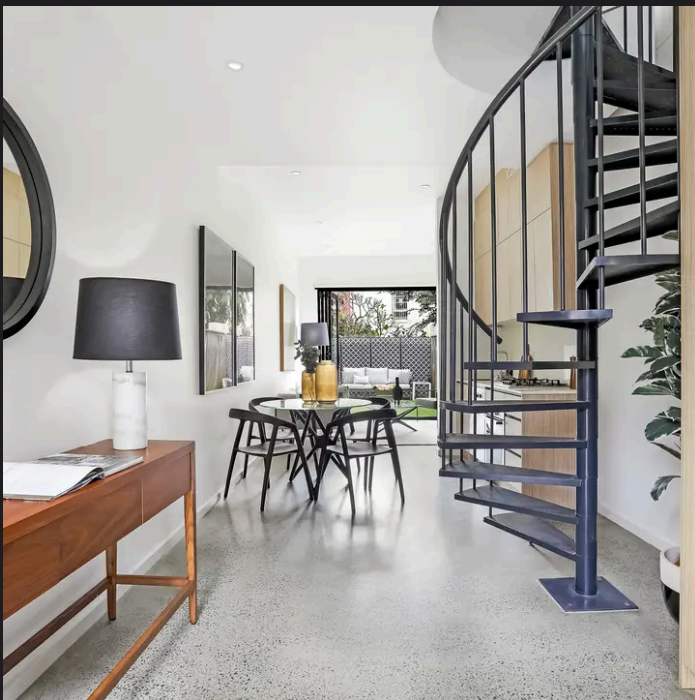


PLANS SHOWN ONLY INDICATIVE OF LAYOUT. DIMENSIONS ARE APPROXIMATE.
Ref. No: 97320



62 HUGO STREET

REDFERN



Charles Tuma 0425 305 455
charles.tuma@raywhite.com

Cadan Hickey 0404 206 240
cadan_hickey@raywhite.com

Disclaimer: All information provided is sourced from what we believe to be reliable sources. However, we do not guarantee its accuracy, and interested parties should conduct their own enquiries. Scale in metres. Indicative only. Dimensions are approximate.