

RayWhite®

TOUMA TAYLOR



**Renovated Terrace on an Exclusive Cul-de
Sac**

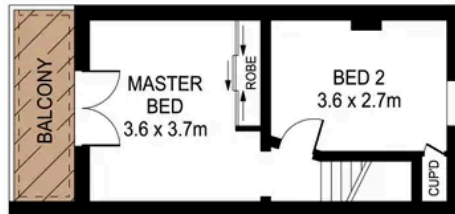
62 Kingsclear Road, Alexandria

2 bed 1 bath

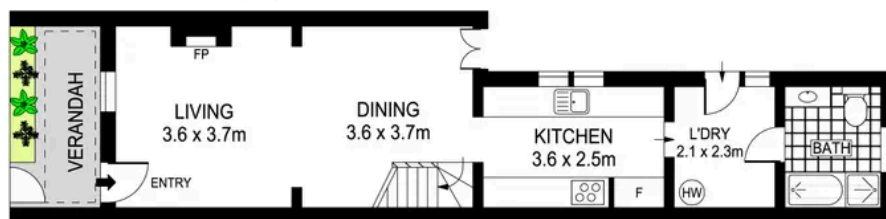
Sold



SITE PLAN
(NOT TO SCALE)



LEVEL ONE



GROUND LEVEL

SCALE (METRES)

PLANS SHOWN ONLY INDICATIVE OF LAYOUT. DIMENSIONS ARE APPROXIMATE.
Ref. No: 103663

APPROX. LAND SIZE: 100m²



62 KINGSCLEAR ROAD

ALEXANDRIA



Charles Touma 0425 305 455
charles.touma@raywhite.com

Hayden Richards 0414 872 784
hayden.richards@raywhite.com

Disclaimer: All information provided is sourced from what we believe to be reliable sources. However, we do not guarantee its accuracy, and interested parties should conduct their own enquiries. Scale in metres. Indicative only. Dimensions are approximate.