

# **RayWhite®**

TOUMA TAYLOR

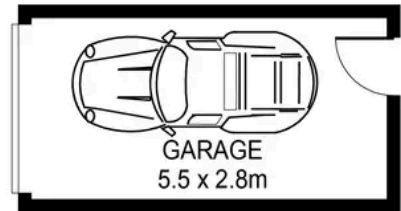
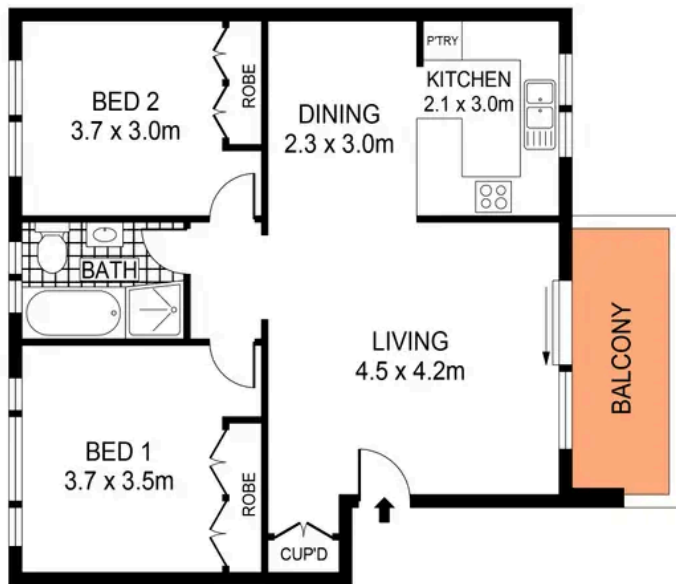


**Generously Proportioned Haven in Prime  
Location**

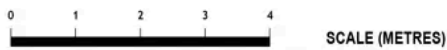
6/22 Roma Avenue, Kensington

2 bed 1 bath 1 car

**Sold**



### THIRD FLOOR



PLANS SHOWN ONLY INDICATIVE OF LAYOUT. DIMENSIONS ARE APPROXIMATE.  
Ref. No: 107320



6/22 ROMA AVENUE

KENSINGTON



**Roger Wardy 0481 355 493**  
roger.wardy@raywhite.com

**Disclaimer:** All information provided is sourced from what we believe to be reliable sources. However, we do not guarantee its accuracy, and interested parties should conduct their own enquiries. Scale in metres. Indicative only. Dimensions are approximate.