

# RayWhite®

TOUMA TAYLOR

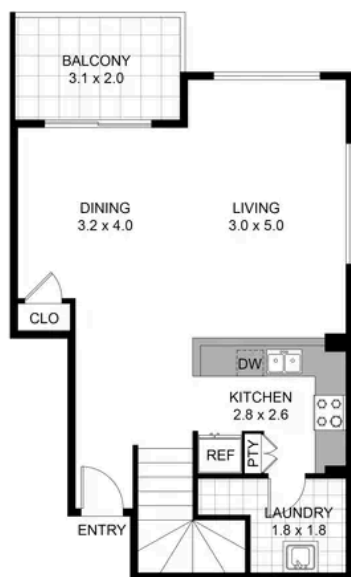


**House alternative with resort-style facilities**

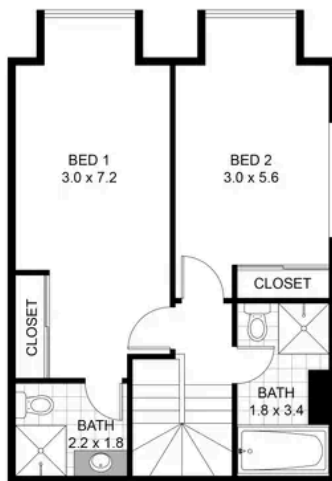
62/30 Nobbs Street, Surry Hills

2 bed 2 bath 2 car

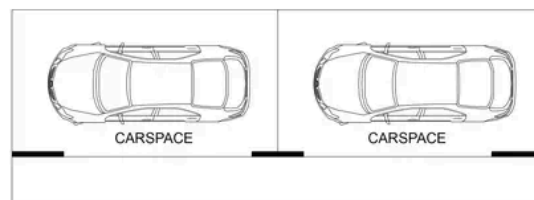
**Sold**



**GROUND  
LEVEL**



**LEVEL  
ONE**



0 1 2 3 4 5

**62/30 NOBBS STREET,  
SURRY HILLS**

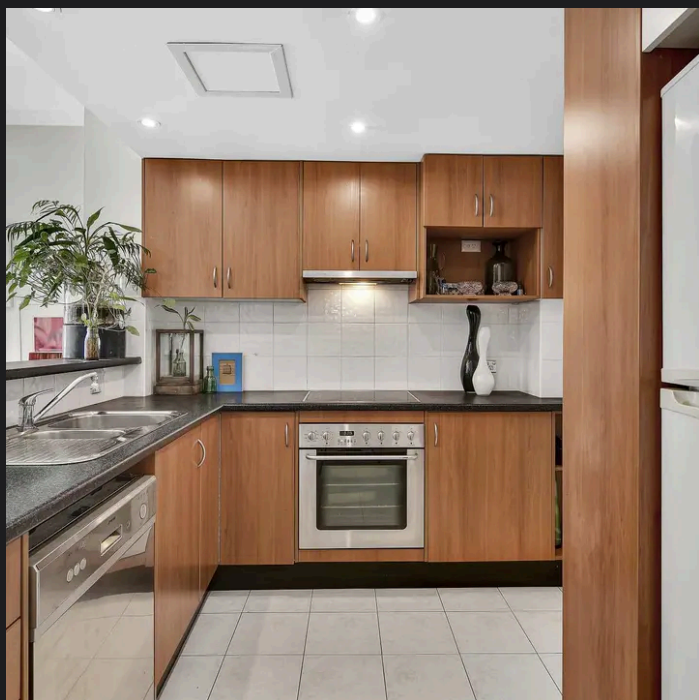
**RAY WHITE TAYLOR & PARTNERS**

PLEASE NOTE: WHILST RAY WHITE TAKES EVERY CARE IN THE PURSUIT ACCURACY, THE PLAN IS SHOWN FOR GENERAL GUIDANCE ONLY. ALL AREAS, MEASUREMENTS AND DISTANCES ARE APPROXIMATE AND NOT SCALE RAY WHITE AND OUR VENDOR WILL ACCEPT NO RESPONSIBILITY FOR ITS ACCURACY. INTERESTED PARTIES ARE ADVISED TO MAKE THEIR OWN INDEPENDENT ENQUIRIES.

**2 Bedroom, 2 Bathroom, 2 Car**



**RayWhite**



**Walter Burfitt-Williams 0402 833 566**  
walter.bw@raywhite.com

**Annie Hodgson 0408 634 276**  
annie.hodgson@raywhite.com

**Disclaimer:** All information provided is sourced from what we believe to be reliable sources. However, we do not guarantee its accuracy, and interested parties should conduct their own enquiries. Scale in metres. Indicative only. Dimensions are approximate.