

# **RayWhite®**

TOUMA TAYLOR

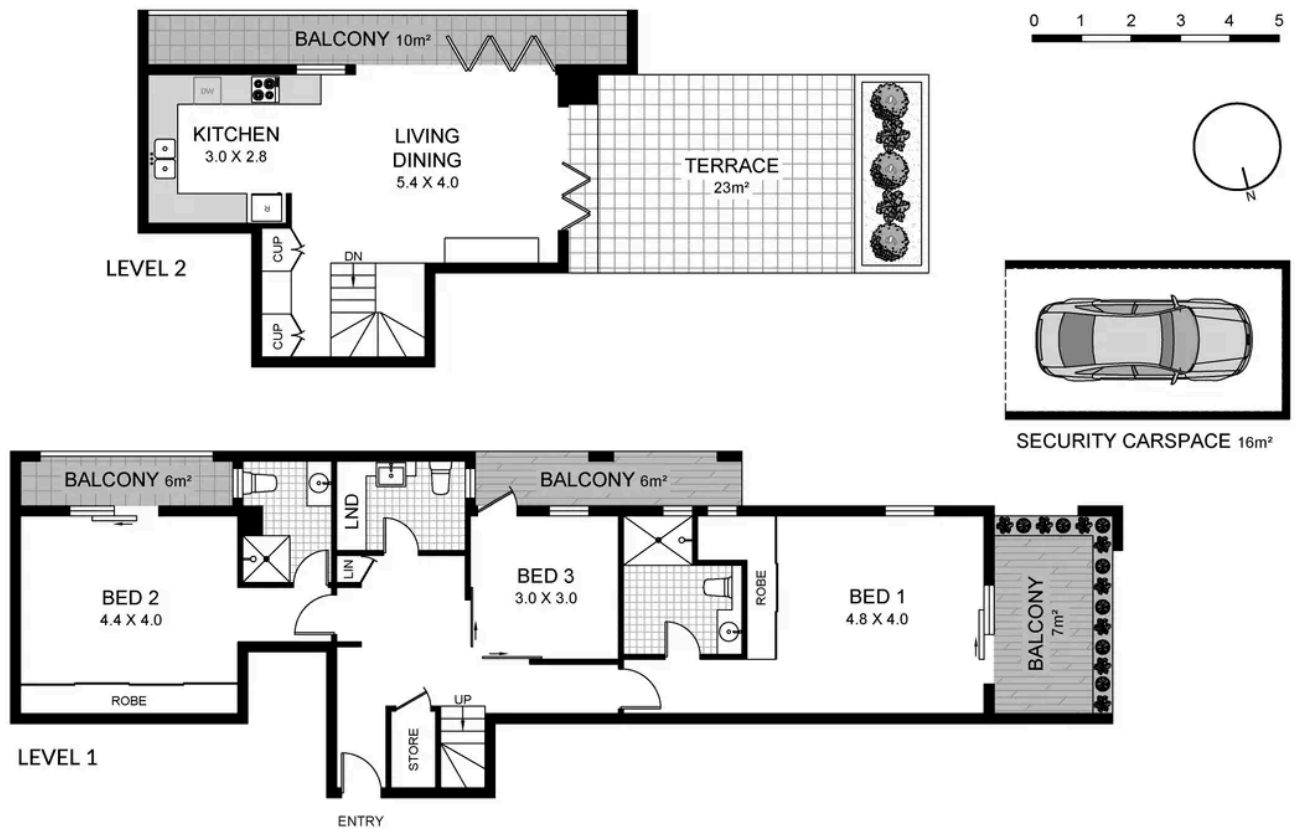


**Newly Renovated Split-Level Penthouse  
With Premium Finishes**

62/450 Elizabeth Street, Surry Hills

3 bed 2 bath 1 car

**Sold**



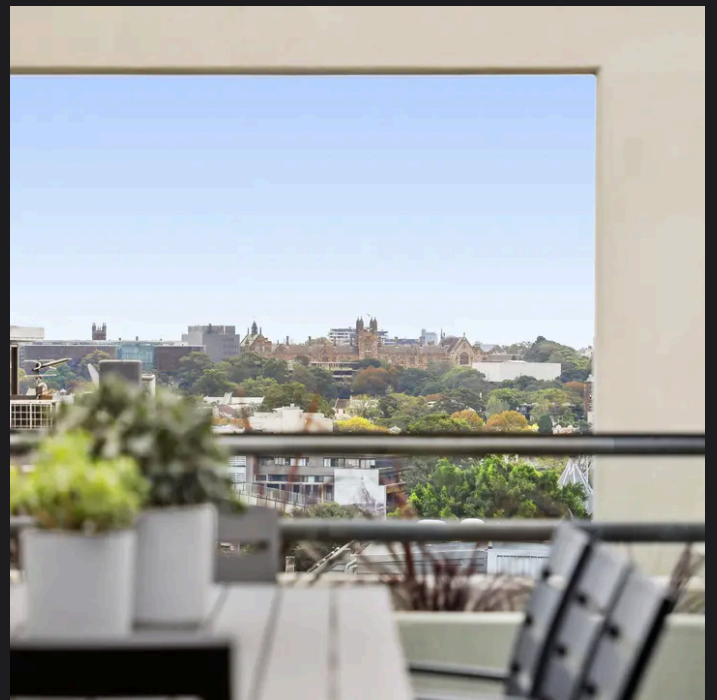
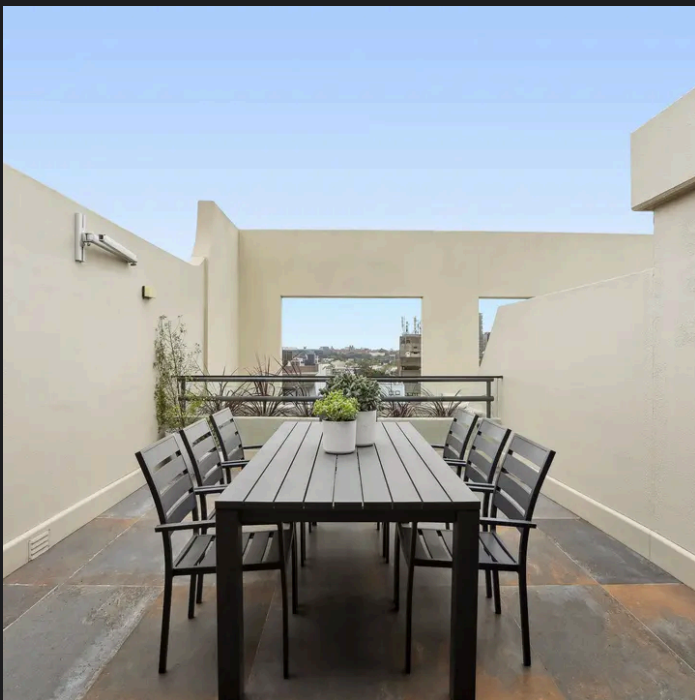
## 62/450 ELIZABETH STREET SURRY HILLS

### 3 Bedroom, 2.5 Bath, 1 Car

Internal area (approx.) 116 sqm  
 External area (approx.) 52 sqm  
 TOTAL (approx.) 168 sqm  
 Parking (approx.) 16 sqm

**Ray White**

PLEASE NOTE: WHILST RAY WHITE TAKES EVERY CARE IN THE PURSUIT OF ACCURACY, THE PLAN IS SHOWN FOR GENERAL GUIDANCE ONLY. ALL AREAS, MEASUREMENTS AND DISTANCES ARE APPROXIMATE AND NOT TO SCALE. RAY WHITE AND OUR VENDOR WILL ACCEPT NO RESPONSIBILITY FOR ITS ACCURACY. INTERESTED PARTIES ARE ADVISED TO MAKE THEIR OWN INDEPENDENT ENQUIRIES.



**Cadan Hickey 0404 206 240**  
 cadan\_hickey@raywhite.com

**Charles Tuma 0425 305 455**  
 charles.tuma@raywhite.com

**Disclaimer:** All information provided is sourced from what we believe to be reliable sources. However, we do not guarantee its accuracy, and interested parties should conduct their own enquiries. Scale in metres. Indicative only. Dimensions are approximate.