

RayWhite®

TOUMA TAYLOR

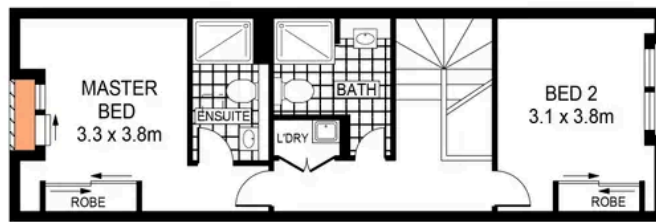


**Split-Level Townhouse-Style Abode In
Idyllic Garden Complex**

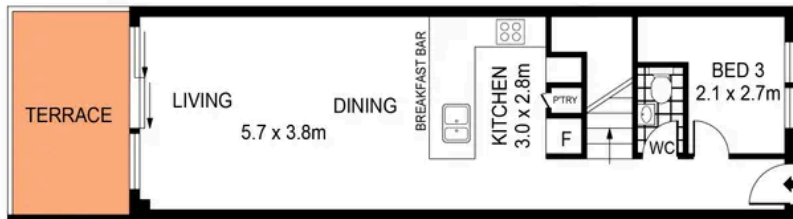
6/27 Rosebery Avenue, Rosebery

3 bed 2 bath 1 car

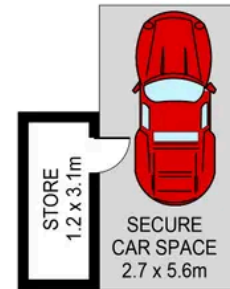
Sold



LEVEL 4



LEVEL 3



BASEMENT

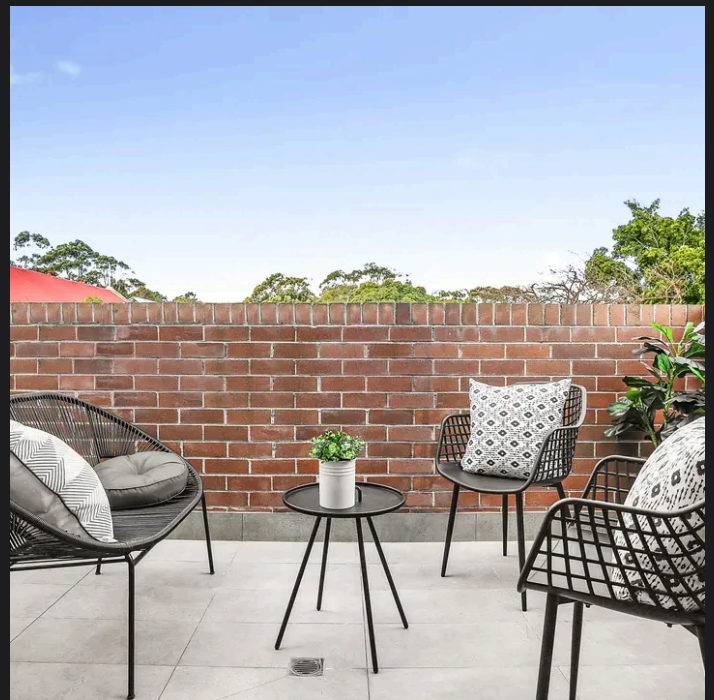
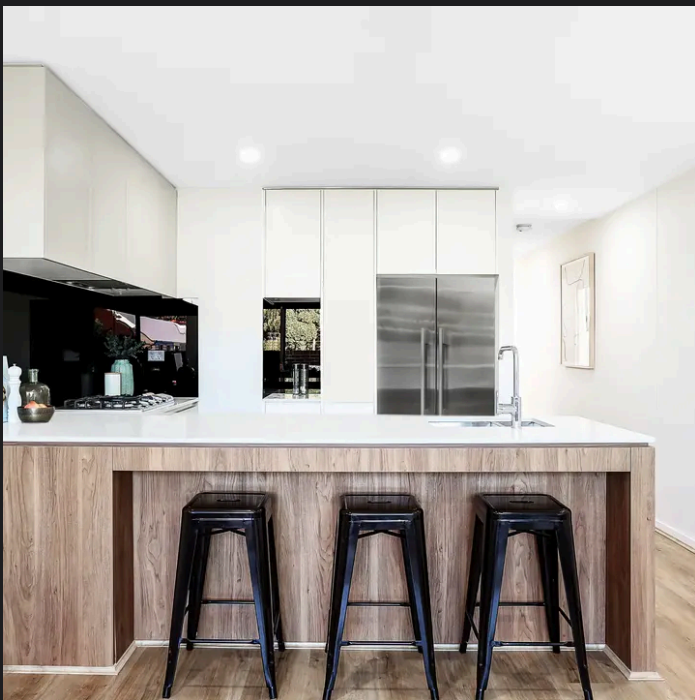


PLANS SHOWN ONLY INDICATIVE OF LAYOUT. DIMENSIONS ARE APPROXIMATE.
Ref. No: 89989



6/27 ROSEBERY AVENUE

ROSEBERY



Max Klimenko 0425 336 555
max.klimenko@raywhite.com

Disclaimer: All information provided is sourced from what we believe to be reliable sources. However, we do not guarantee its accuracy, and interested parties should conduct their own enquiries. Scale in metres. Indicative only. Dimensions are approximate.