

RayWhite®

TOUMA TAYLOR



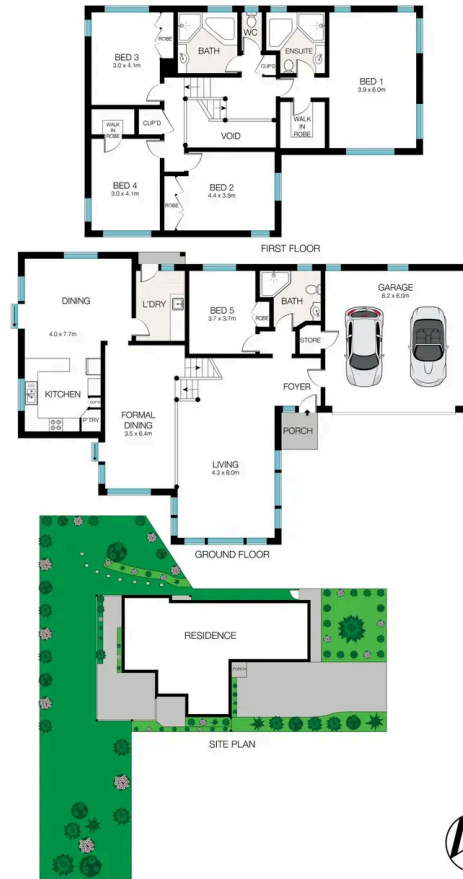
**Flawless Family Home In Premium
Location**

62B Miowera Road, North Turramurra

5 bed 3 bath 2 car

Sold

62B MIOVERA ROAD NORTH TURRAMURRA

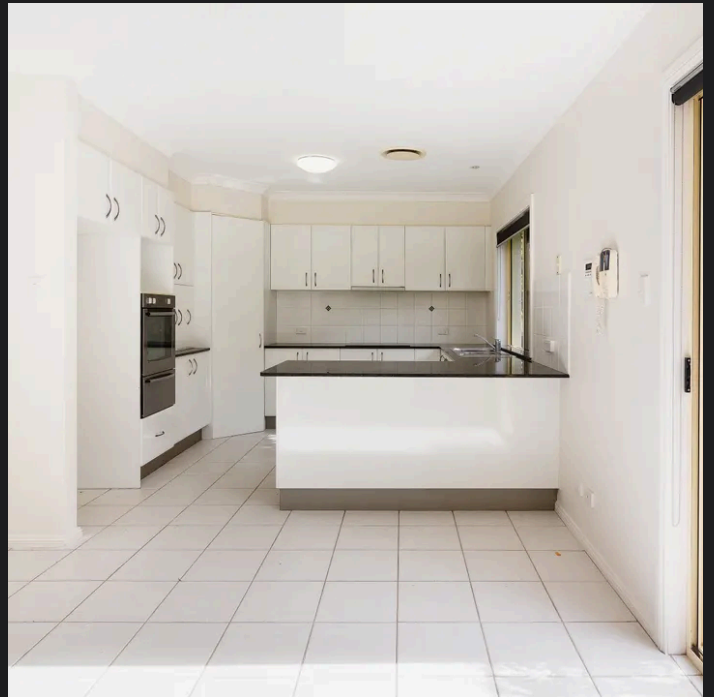


RAY WHITE TAYLORJONES

All information contained herein is gathered from sources we believe to be reliable. However, we cannot guarantee it's accuracy and interested persons should rely on their own enquiries. Dimensions are approximate.



Approximate Areas:	
Internal Area:	283 sqm
Land Size:	772 sqm



Disclaimer: All information provided is sourced from what we believe to be reliable sources. However, we do not guarantee its accuracy, and interested parties should conduct their own enquiries. Scale in metres. Indicative only. Dimensions are approximate.