

RayWhite®

TOUMA TAYLOR

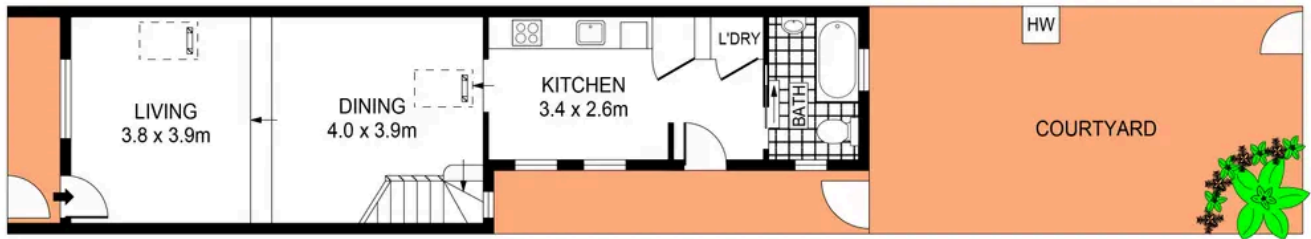


**Traditional terrace with sizable in/outdoor
living space**

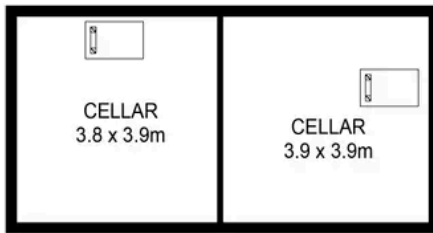
63 Young Street, Redfern

2 bed 1 bath

Sold



LEVEL ONE



BASEMENT



LEVEL TWO



PLANS SHOWN ONLY INDICATIVE OF LAYOUT. DIMENSIONS ARE APPROXIMATE.
Ref. No: 88057



63 YOUNG STREET

REDFERN



Charles Touma 0425 305 455
charles.touma@raywhite.com

Hayden Richards 0414 872 784
hayden.richards@raywhite.com

Disclaimer: All information provided is sourced from what we believe to be reliable sources. However, we do not guarantee its accuracy, and interested parties should conduct their own enquiries. Scale in metres. Indicative only. Dimensions are approximate.