

RayWhite[®]

TOUMA TAYLOR

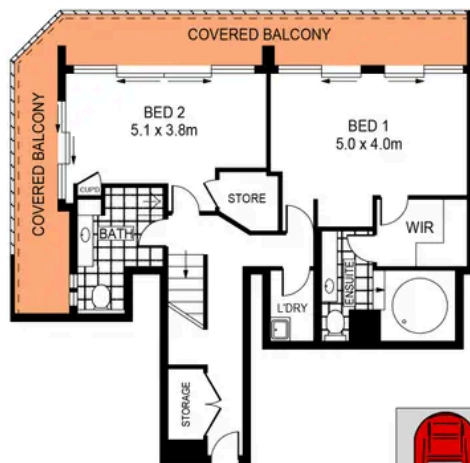


**Tri-level Penthouse with Spectacular
City/Harbour Views**

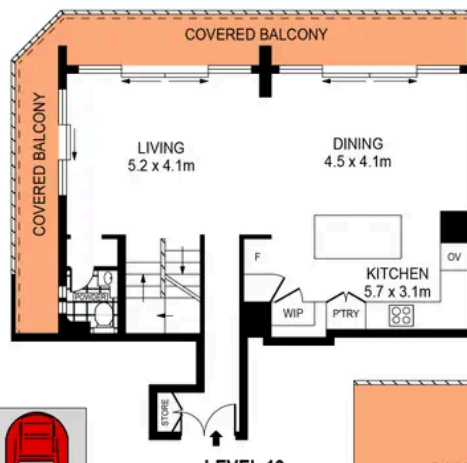
63/253 Goulburn Street, Surry Hills

3 bed 3 bath 2 car

Sold



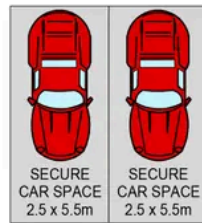
LEVEL 18



LEVEL 19



LEVEL 20



LEVEL 4

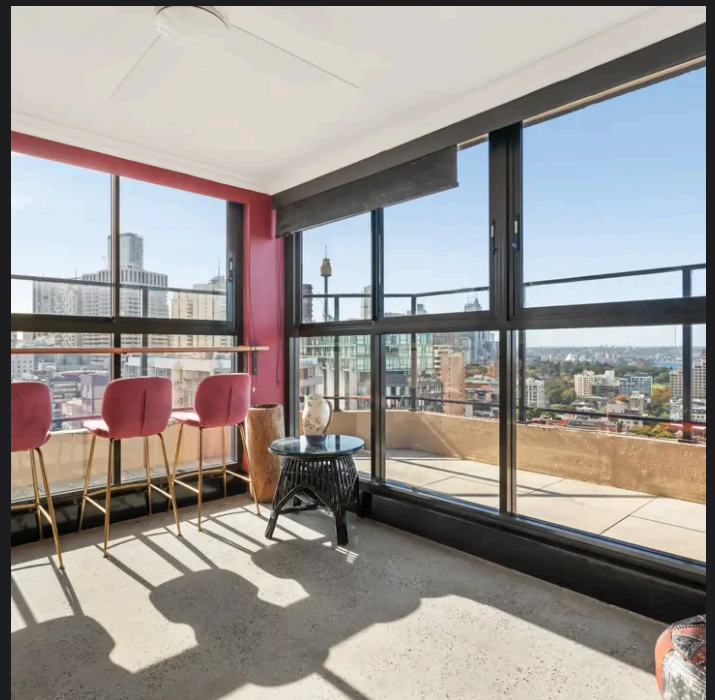
0 1 2 3 4 5
SCALE (METRES)

PLANS SHOWN ONLY INDICATIVE OF LAYOUT. DIMENSIONS ARE APPROXIMATE.
Ref. No: 04679



63/253 GOULBURN STREET

SURRY HILLS



Charles Touma 0425 305 455
charles.touma@raywhite.com

Con Fotaras 0411 648 458
con.fotaras@raywhite.com

Disclaimer: All information provided is sourced from what we believe to be reliable sources. However, we do not guarantee its accuracy, and interested parties should conduct their own enquiries. Scale in metres. Indicative only. Dimensions are approximate.