

RayWhite[®]

TOUMA TAYLOR



**Timelessly Refined Family Abode in a
Serene Enclave**

7 Cunningham Street, Matraville

4 bed 3 bath 4 car

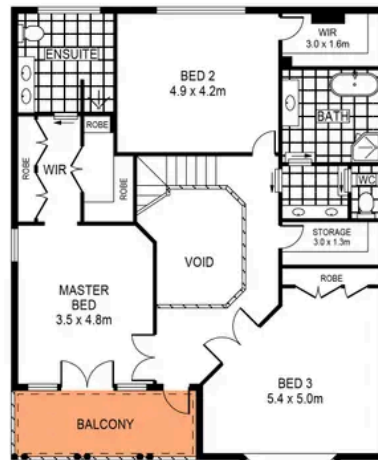
Sold



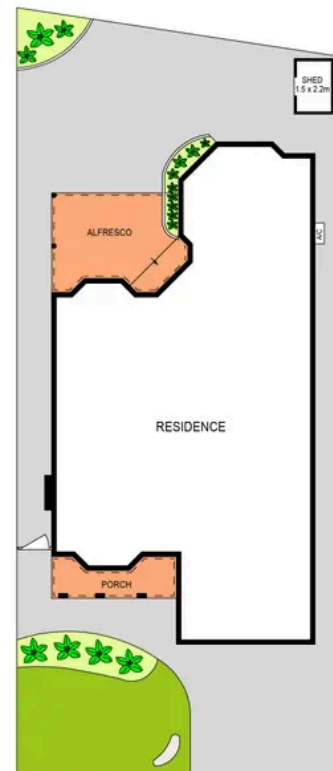
GROUND FLOOR

SCALE (METRES)

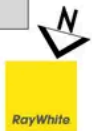
PLANS SHOWN ONLY INDICATIVE OF LAYOUT. DIMENSIONS ARE APPROXIMATE.
Ref. No: 106491



FIRST FLOOR

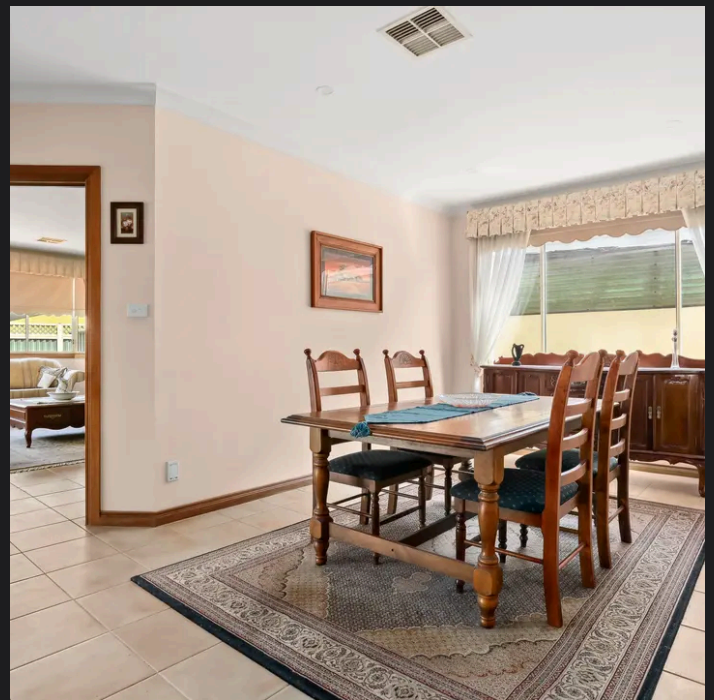


SITE PLAN
(NOT TO SCALE)



7 CUNNINGHAM STREET

MATRAVILLE



Roger Wardy 0481 355 493
roger.wardy@raywhite.com

Disclaimer: All information provided is sourced from what we believe to be reliable sources. However, we do not guarantee its accuracy, and interested parties should conduct their own enquiries. Scale in metres. Indicative only. Dimensions are approximate.