

RayWhite®

TOUMA TAYLOR

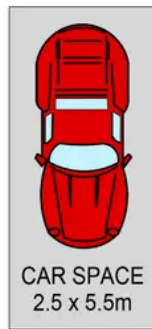


**North Facing Lifestyle Abode with
Sweeping Parkland Outlook**

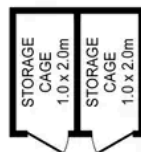
702A/14B Mentmore Avenue, Rosebery

2 bed 2 bath 1 car

Sold



LEVEL ONE



BASEMENT



LEVEL SEVEN

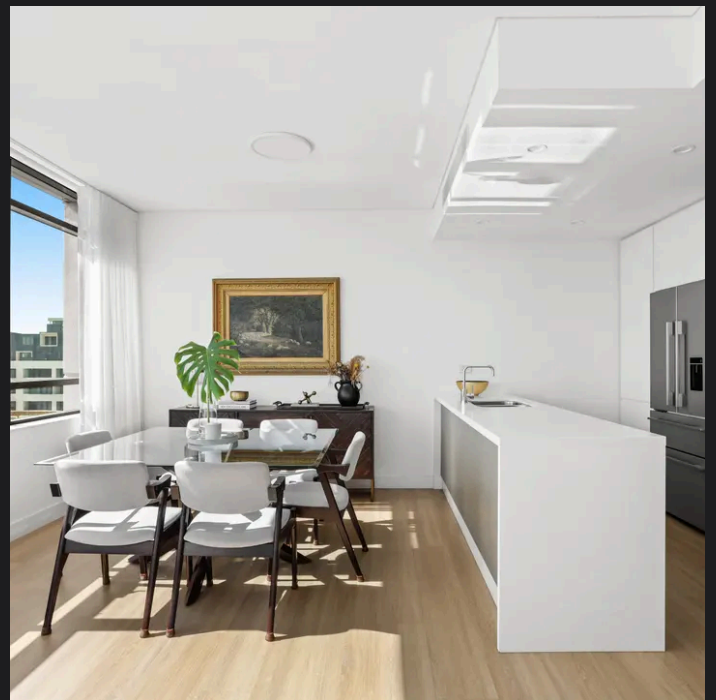


PLANS SHOWN ONLY INDICATIVE OF LAYOUT. DIMENSIONS ARE APPROXIMATE.
Ref. No: 105128



702A/14 MENTMORE AVENUE

ROSEBERY



Max Klimenko 0425 336 555
max.klimenko@raywhite.com

Disclaimer: All information provided is sourced from what we believe to be reliable sources. However, we do not guarantee its accuracy, and interested parties should conduct their own enquiries. Scale in metres. Indicative only. Dimensions are approximate.