

RayWhite®

TOUMA TAYLOR

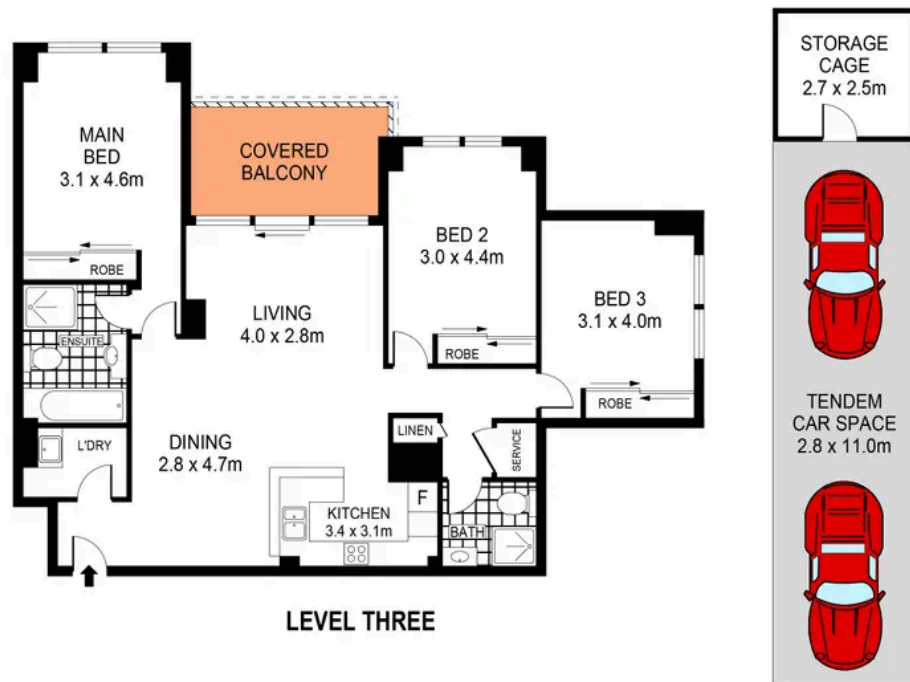


**North Facing Light Filled Apartment in
'Kimberley Estate'**

704/83-93 Dalmeny Avenue, Rosebery

3 bed 2 bath 2 car

Sold



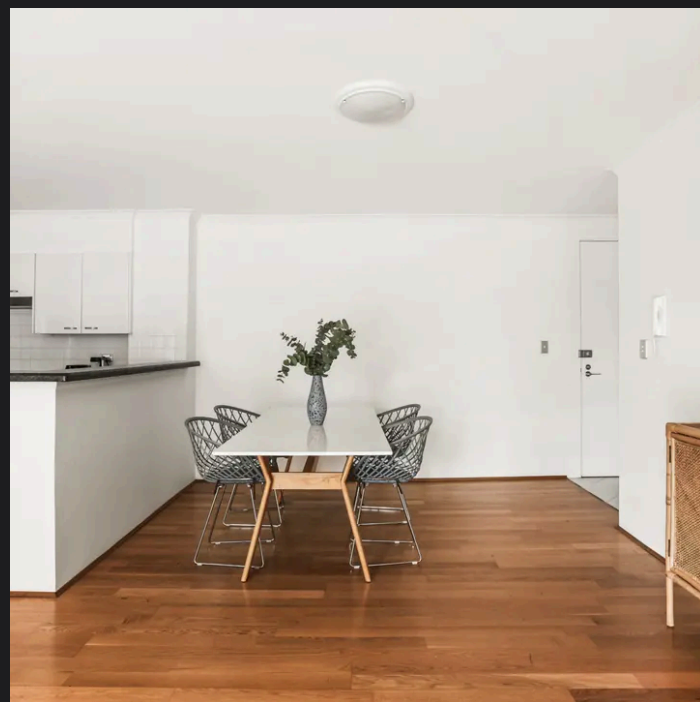
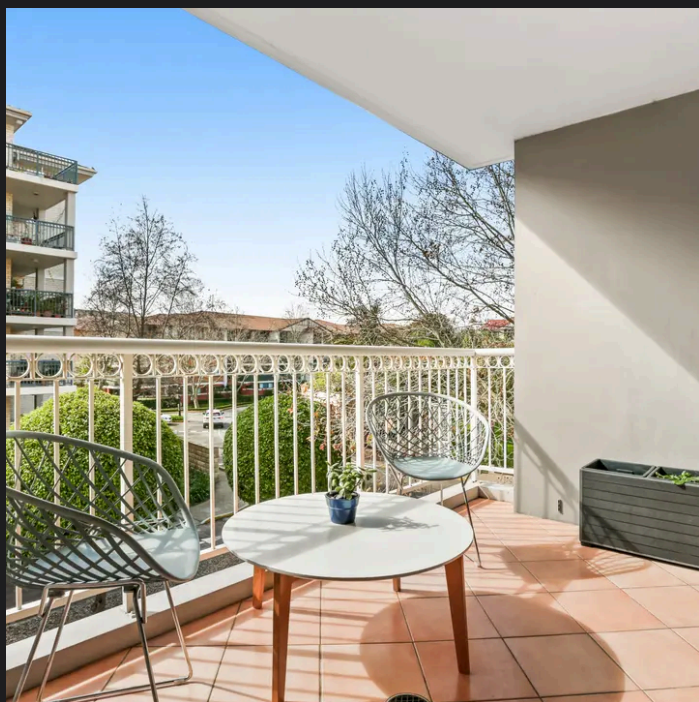
0 1 2 3 4 5
 SCALE (METRES)

PLANS SHOWN ONLY INDICATIVE OF LAYOUT. DIMENSIONS ARE APPROXIMATE.
 Ref. No: 105202



704/83-93 DALMENY AVENUE

ROSEBERY



Max Klimenko 0425 336 555
 max.klimenko@raywhite.com

Disclaimer: All information provided is sourced from what we believe to be reliable sources. However, we do not guarantee its accuracy, and interested parties should conduct their own enquiries. Scale in metres. Indicative only. Dimensions are approximate.