

RayWhite[®]

TOUMA TAYLOR

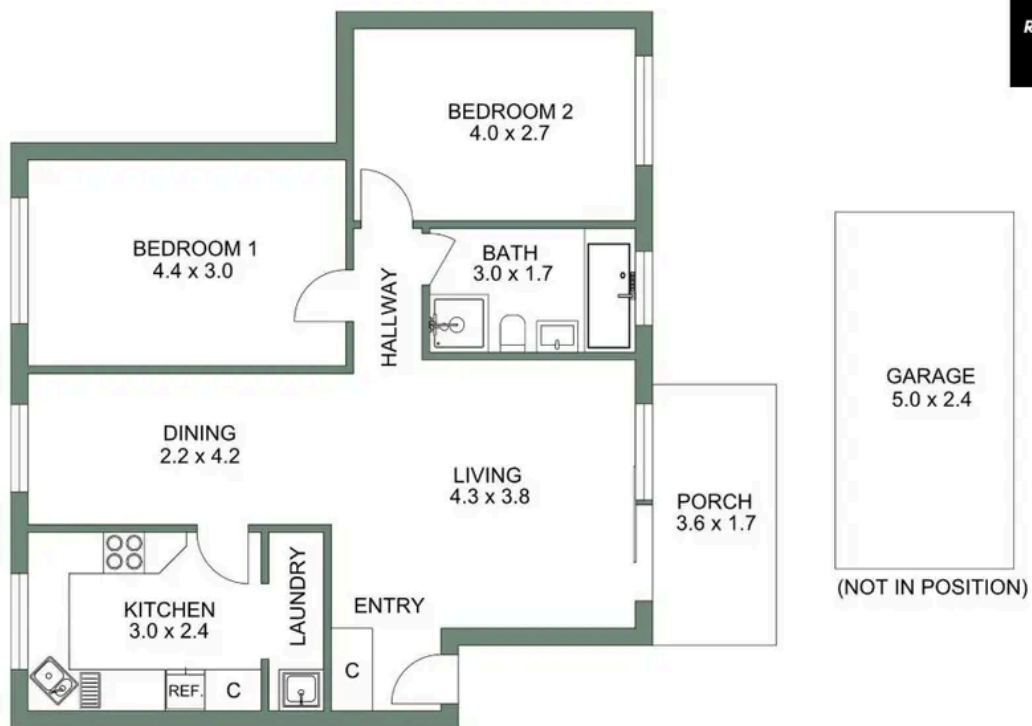


**Tranquil Ground Floor Apartment in Prime
Randwick Locale**

71/6-8 Frances Street, Randwick

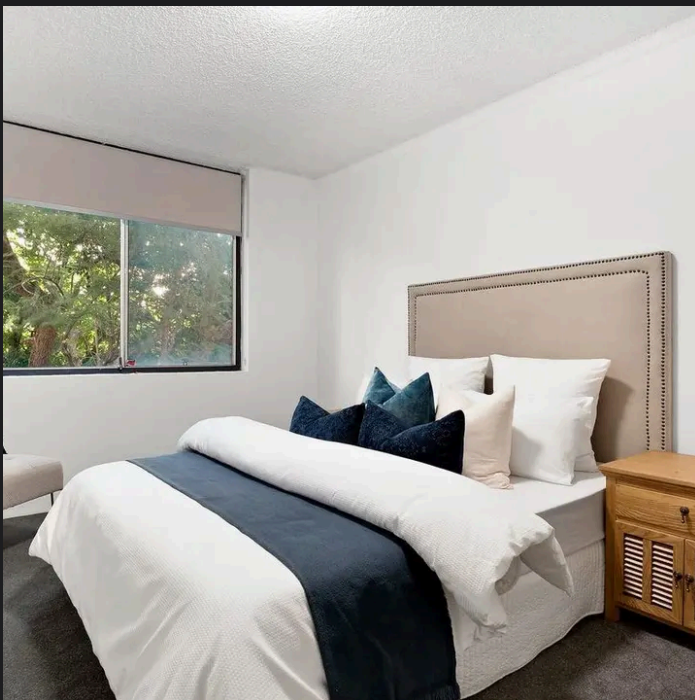
2 bed 1 bath 1 car

Sold



APPROXIMATE AREAS	
Internal Area	81 sqm
External Area	7 sqm
Total Area	88 sqm

Plans should not be relied on. Interested parties should make and rely on their own enquiries.
The floor plan is not to scale. Measurements are indicative and in metres. Exterior elements are not in position.



Roger Wardy 0481 355 493
roger.wardy@raywhite.com

Jesse Petersen 0404197940
jesse.petersen@raywhite.com