

RayWhite®

TOUMA TAYLOR



**North Facing Marvellous Tri-Level
Townhouse**

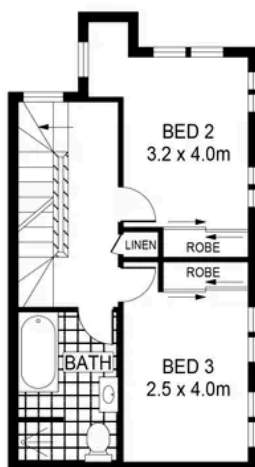
7/161 Phillip Street, Waterloo

3 bed 2 bath 2 car

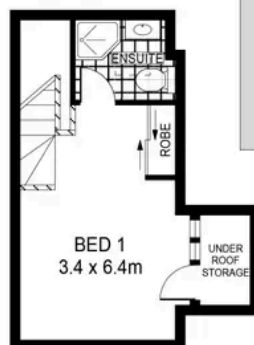
Sold



ENTRY LEVEL



LEVEL ONE



LEVEL TWO

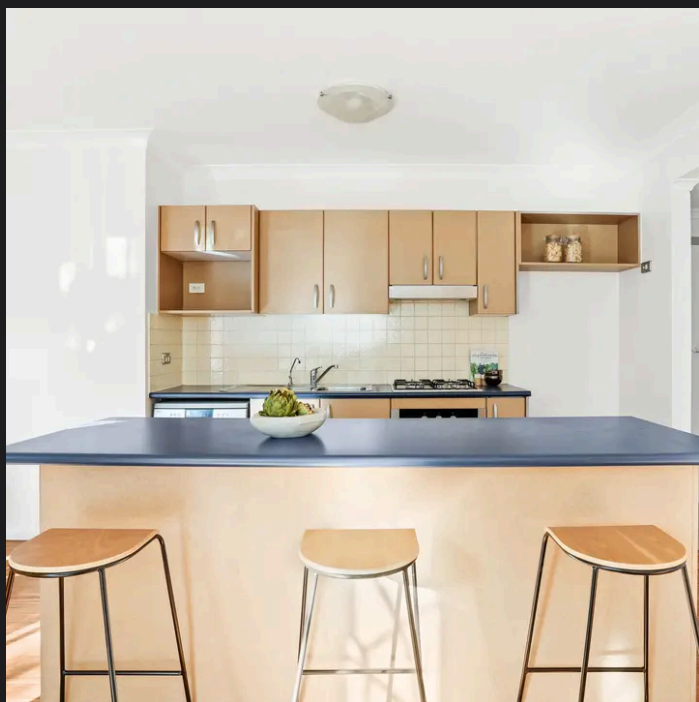


PLANS SHOWN ONLY INDICATIVE OF LAYOUT. DIMENSIONS ARE APPROXIMATE.
Ref. No: 104819



7/161 PHILLIP STREET

WATERLOO



Hayden Richards 0414 872 784
hayden.richards@raywhite.com

Disclaimer: All information provided is sourced from what we believe to be reliable sources. However, we do not guarantee its accuracy, and interested parties should conduct their own enquiries. Scale in metres. Indicative only. Dimensions are approximate.