

RayWhite[®]

TOUMA TAYLOR



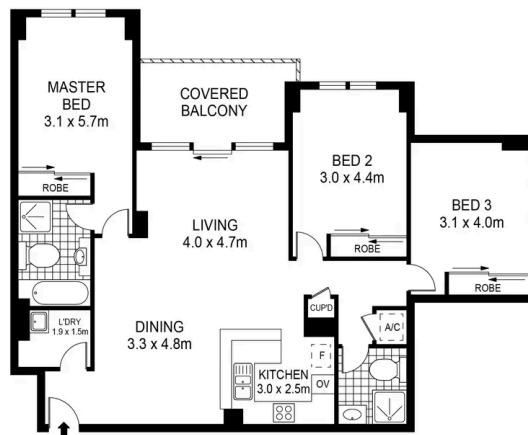
**North facing apartment in resort-style
complex**

720/83-93 Dalmeny Avenue, Rosebery

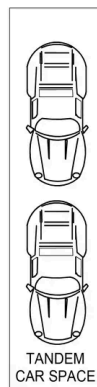
3 bed 2 bath 2 car

RayWhite.

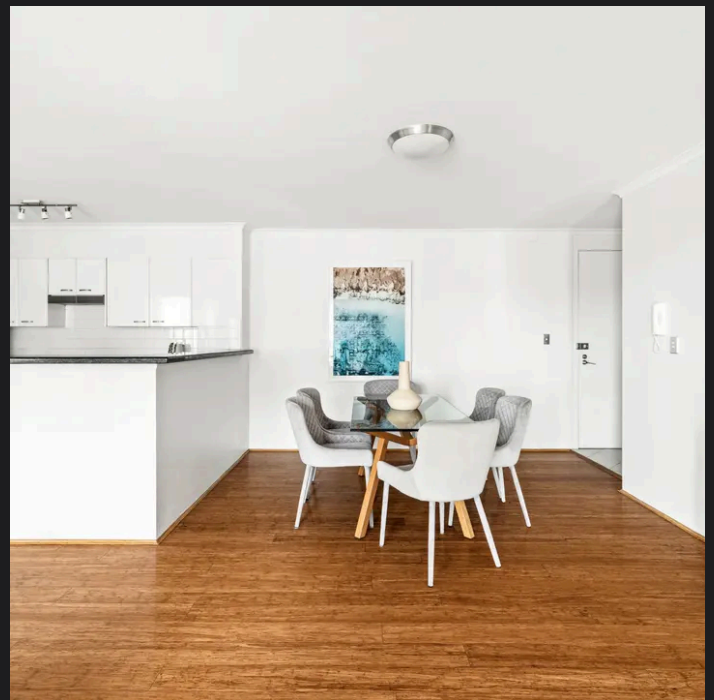
TOUMA TAYLOR



LEVEL FIVE



Disclaimer: All information provided is sourced from what we believe to be reliable sources. However, we do not guarantee its accuracy, and interested parties should conduct their own enquiries. Scale in metres. Indicative only. Dimensions are approximate.



Max Klimenko 0425 336 555
max.klimenko@raywhite.com

Dylan Corelli 0458 711 577
dylan.corelli@raywhite.com

Disclaimer: All information provided is sourced from what we believe to be reliable sources. However, we do not guarantee its accuracy, and interested parties should conduct their own enquiries. Scale in metres. Indicative only. Dimensions are approximate.