

RayWhite®

TOUMA TAYLOR

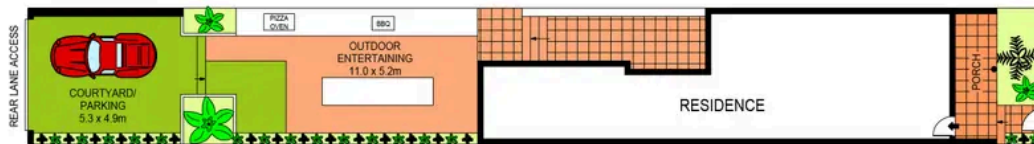


**5.7m Wide Classic Victorian Terrace on
224sqm Block**

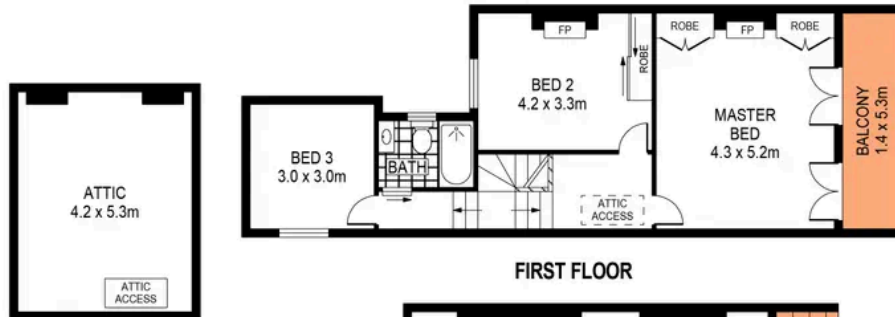
732 Bourke Street, Redfern

3 bed 2 bath 1 car

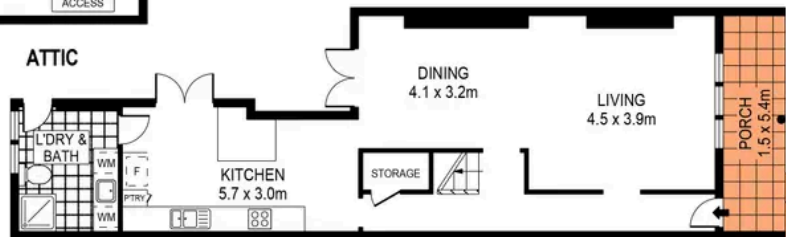
Sold



SITE PLAN
(NOT TO SCALE)



FIRST FLOOR



ATTIC

0 1 2 3 4 5
SCALE (METRES)

GROUND FLOOR

PLANS SHOWN ONLY INDICATIVE OF LAYOUT. DIMENSIONS ARE APPROXIMATE.
Ref. No. 05504



732 BOURKE STREET

REDFERN



Charles Touma 0425 305 455
charles.touma@raywhite.com

Cadan Hickey 0404 206 240
cadan_hickey@raywhite.com

Disclaimer: All information provided is sourced from what we believe to be reliable sources. However, we do not guarantee its accuracy, and interested parties should conduct their own enquiries. Scale in metres. Indicative only. Dimensions are approximate.