

RayWhite®

TOUMA TAYLOR

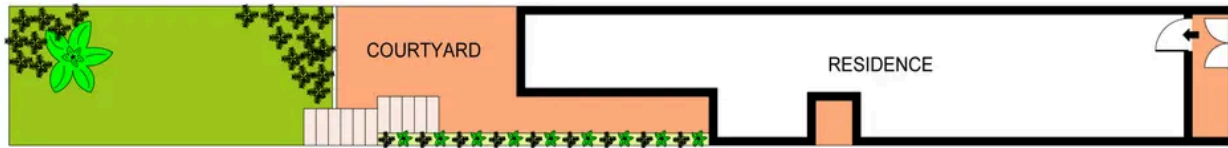


**Classic Terrace On Rare Oversized Block In
The Heart Of Redfern**

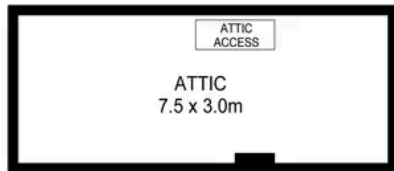
77 Wells Street, Redfern

3 bed 1 bath

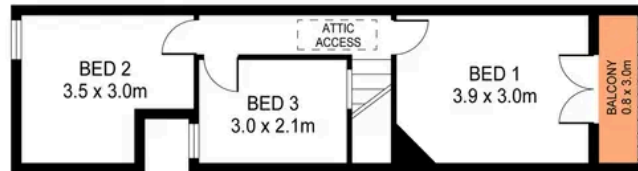
Sold



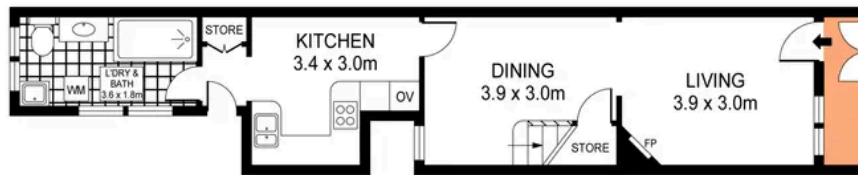
SITE PLAN
(NOT TO SCALE)



ATTIC



FIRST FLOOR



GROUND FLOOR



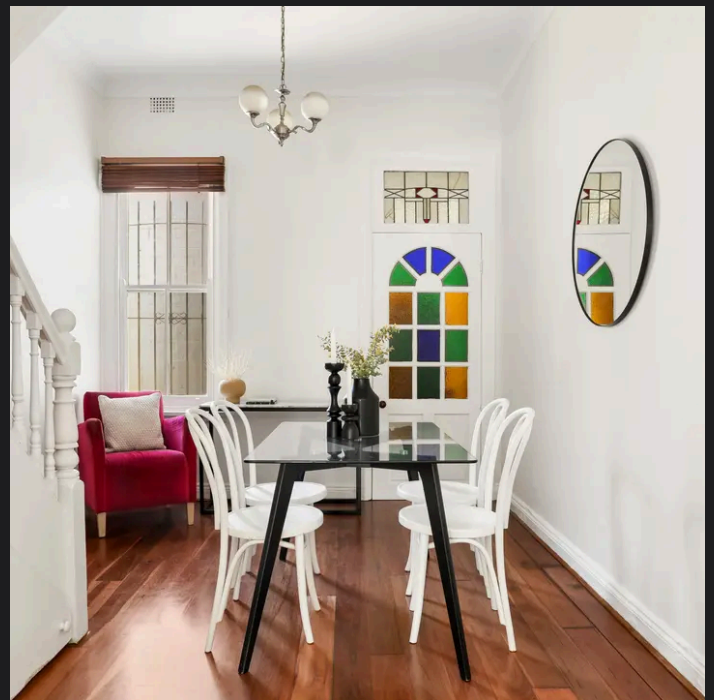
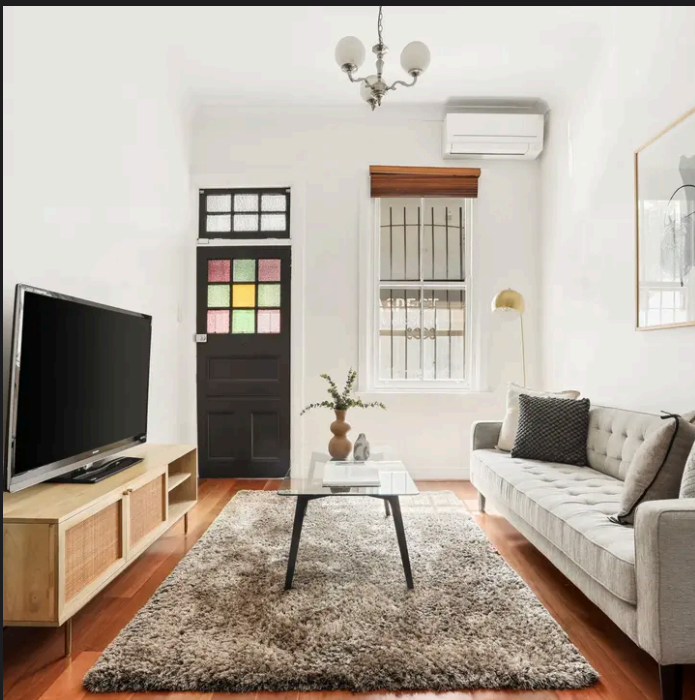
PLANS SHOWN ONLY INDICATIVE OF LAYOUT. DIMENSIONS ARE APPROXIMATE.
Ref. No. 108778

TOTAL SIZE : 106.2m²



77 WELLS STREET

REDFERN



Hayden Richards 0414 872 784
hayden.richards@raywhite.com

Disclaimer: All information provided is sourced from what we believe to be reliable sources. However, we do not guarantee its accuracy, and interested parties should conduct their own enquiries. Scale in metres. Indicative only. Dimensions are approximate.