

RayWhite®

TOUMA TAYLOR

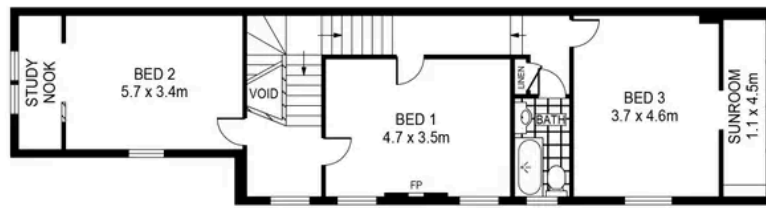


**31m North Facing Federation Terrace on
234m2**

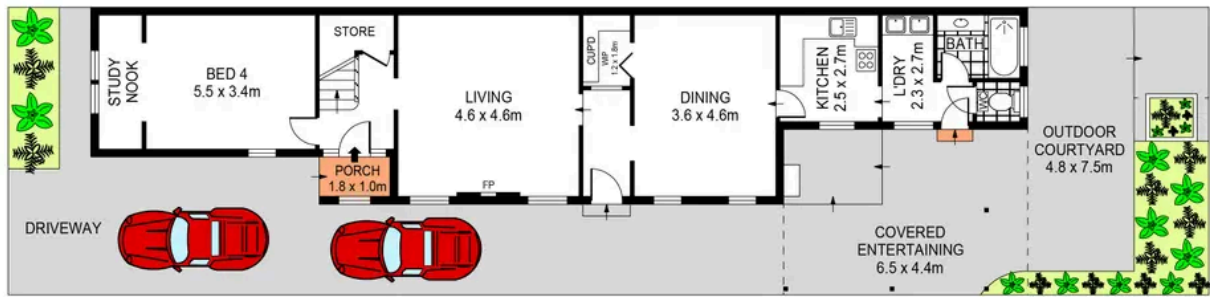
787 Bourke Street, Redfern

4 bed 2 bath 2 car

Sold



FIRST FLOOR



GROUND FLOOR

0 1 2 3 4 5 SCALE (METRES)

PLANS SHOWN ONLY INDICATIVE OF LAYOUT. DIMENSIONS ARE APPROXIMATE.
Ref. No: 02534



787 BOURKE STREET

REDFERN



Charles Touma 0425 305 455
charles.touma@raywhite.com

Hayden Richards 0414 872 784
hayden.richards@raywhite.com

Disclaimer: All information provided is sourced from what we believe to be reliable sources. However, we do not guarantee its accuracy, and interested parties should conduct their own enquiries. Scale in metres. Indicative only. Dimensions are approximate.