

RayWhite[®]

TOUMA TAYLOR

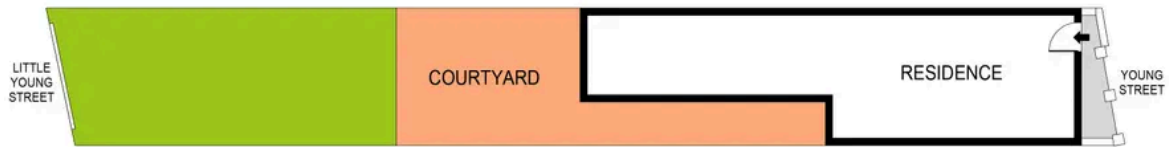


Light Filled Terrace In Leafy Urban Pocket

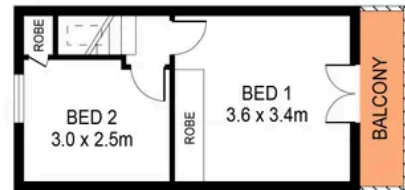
8 Young Street, Redfern

2 bed 1 bath 1 car

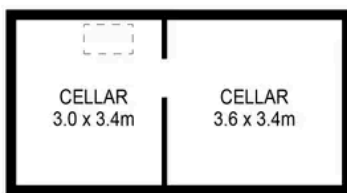
Sold



SITE PLAN
(NOT TO SCALE)



LEVEL THREE



LEVEL ONE



LEVEL TWO

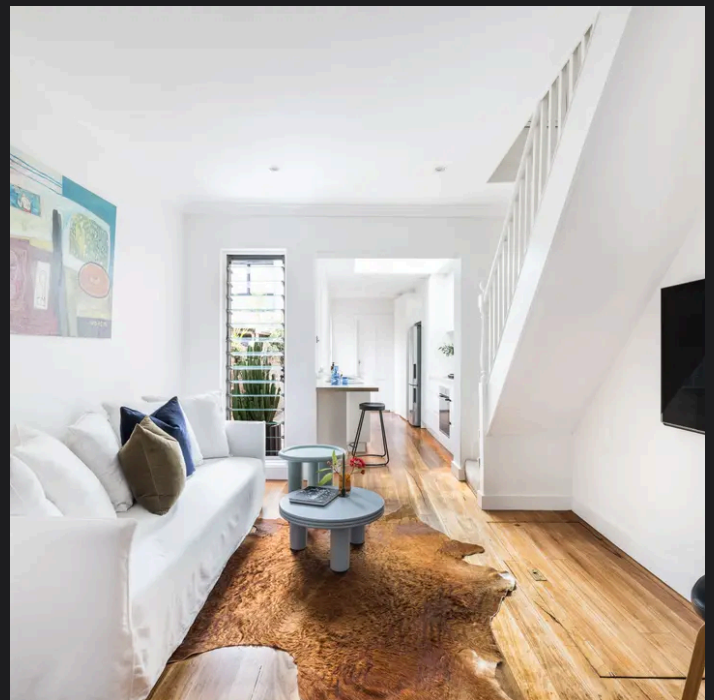
0 1 2 3 4 5 **SCALE (METRES)**

PLANS SHOWN ONLY INDICATIVE OF LAYOUT. DIMENSIONS ARE APPROXIMATE.
Ref. No: 03642



8 YOUNG STREET

REDFERN



Charles Touma 0425 305 455
charles.touma@raywhite.com

Cadan Hickey 0404 206 240
cadan_hickey@raywhite.com

Disclaimer: All information provided is sourced from what we believe to be reliable sources. However, we do not guarantee its accuracy, and interested parties should conduct their own enquiries. Scale in metres. Indicative only. Dimensions are approximate.