

# RayWhite®

TOUMA TAYLOR

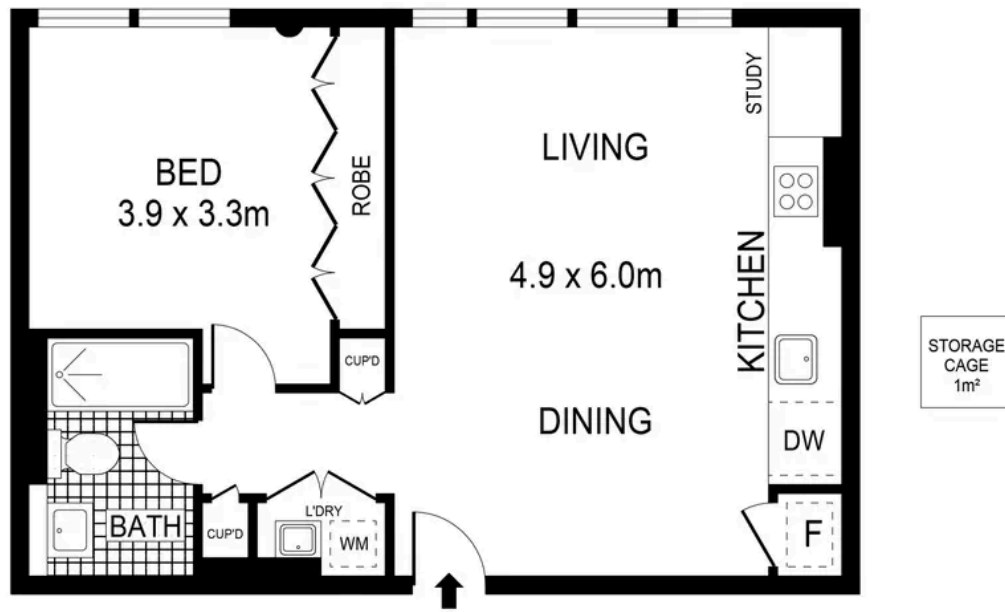


**Sleek warehouse conversion with state-of-the-art technology**

82/8 Crewe Place, Rosebery

1 bed 1 bath

**Sold**



## LEVEL FOUR



PLANS SHOWN ONLY INDICATIVE OF LAYOUT. DIMENSIONS ARE APPROXIMATE.  
Ref. No: 01114



82/8 CREWE PLACE

ROSEBERY



**Max Klimenko 0425 336 555**  
max.klimenko@raywhite.com

**Dylan Corelli 0458 711 577**  
dylan.corelli@raywhite.com

**Disclaimer:** All information provided is sourced from what we believe to be reliable sources. However, we do not guarantee its accuracy, and interested parties should conduct their own enquiries. Scale in metres. Indicative only. Dimensions are approximate.