

RayWhite®

TOUMA TAYLOR

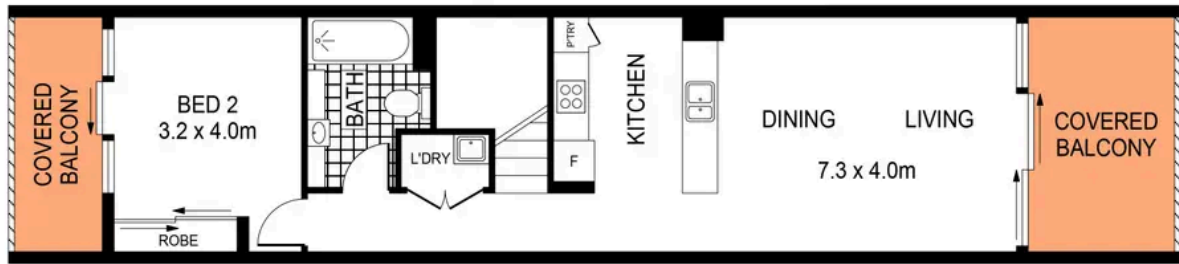


**Low maintenance urban living in the
acclaimed `Zinc' complex**

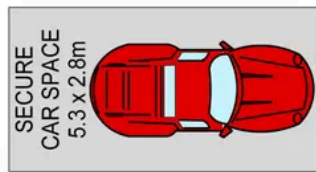
8/30-44 Garden Street, Alexandria

2 bed 2 bath 1 car

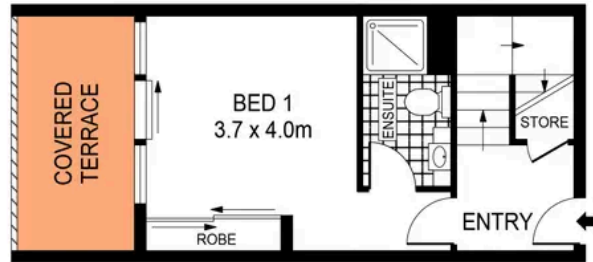
Sold



UPPER LEVEL



BASEMENT



GROUND LEVEL



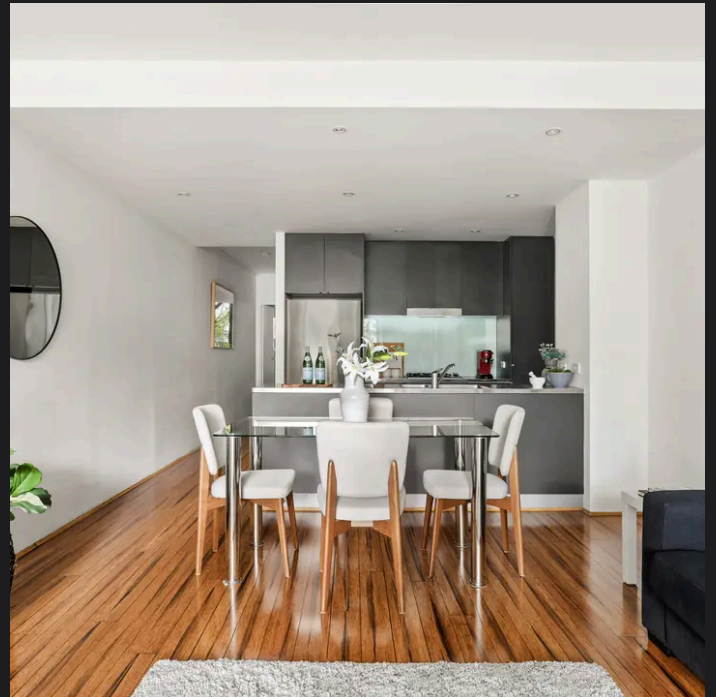
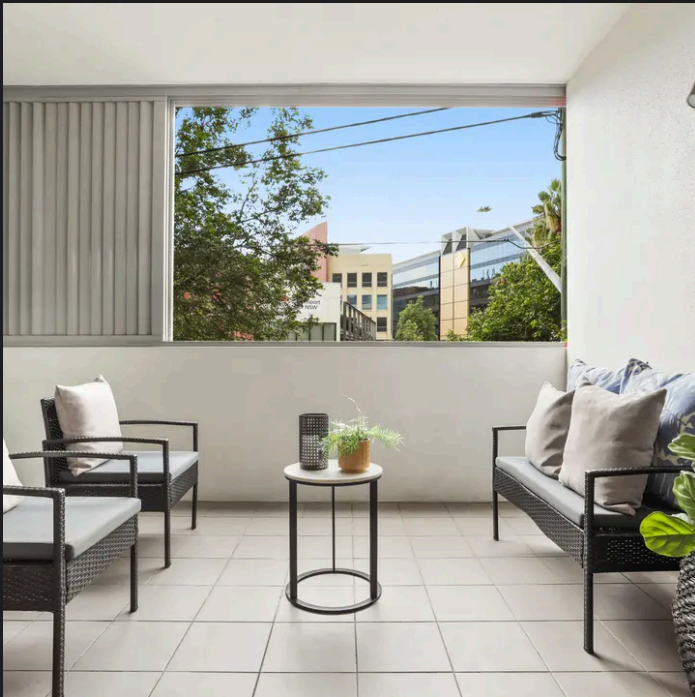
PLANS SHOWN ONLY INDICATIVE OF LAYOUT. DIMENSIONS ARE APPROXIMATE.
Ref. No: 103126

APPROX UNIT SIZE: 111sqm
APPROX PARKING SIZE: 14sqm



8/30-44 GARDEN STREET

ALEXANDRIA



Max Klimenko 0425 336 555
max.klimenko@raywhite.com

Disclaimer: All information provided is sourced from what we believe to be reliable sources. However, we do not guarantee its accuracy, and interested parties should conduct their own enquiries. Scale in metres. Indicative only. Dimensions are approximate.