

RayWhite®

TOUMA TAYLOR



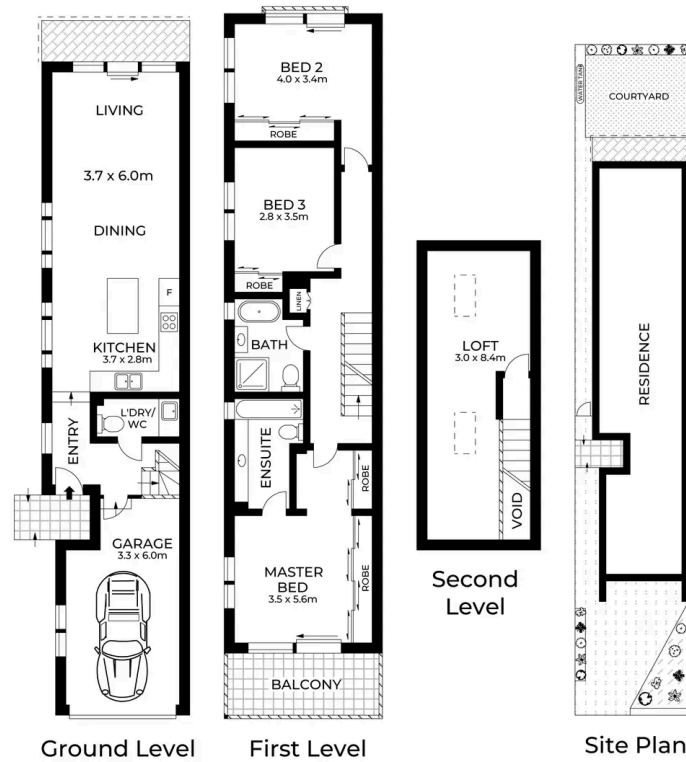
**Modern Comfort And Total Convenience
On The Cusp Of Randwick!**

84A Botany Street, Kingsford

4 bed 2 bath 2 car

Sold

84A Botany Street, Kingsford



TOTAL LAND SIZE : 147m² 

PLANS SHOWN ONLY INDICATIVE OF LAYOUT. DIMENSIONS ARE APPROXIMATE.
Ref. No: 00545



Roger Wardy 0481 355 493
roger.wardy@raywhite.com

Jesse Petersen 0404197940
jesse.petersen@raywhite.com

Disclaimer: All information provided is sourced from what we believe to be reliable sources. However, we do not guarantee its accuracy, and interested parties should conduct their own enquiries. Scale in metres. Indicative only. Dimensions are approximate.