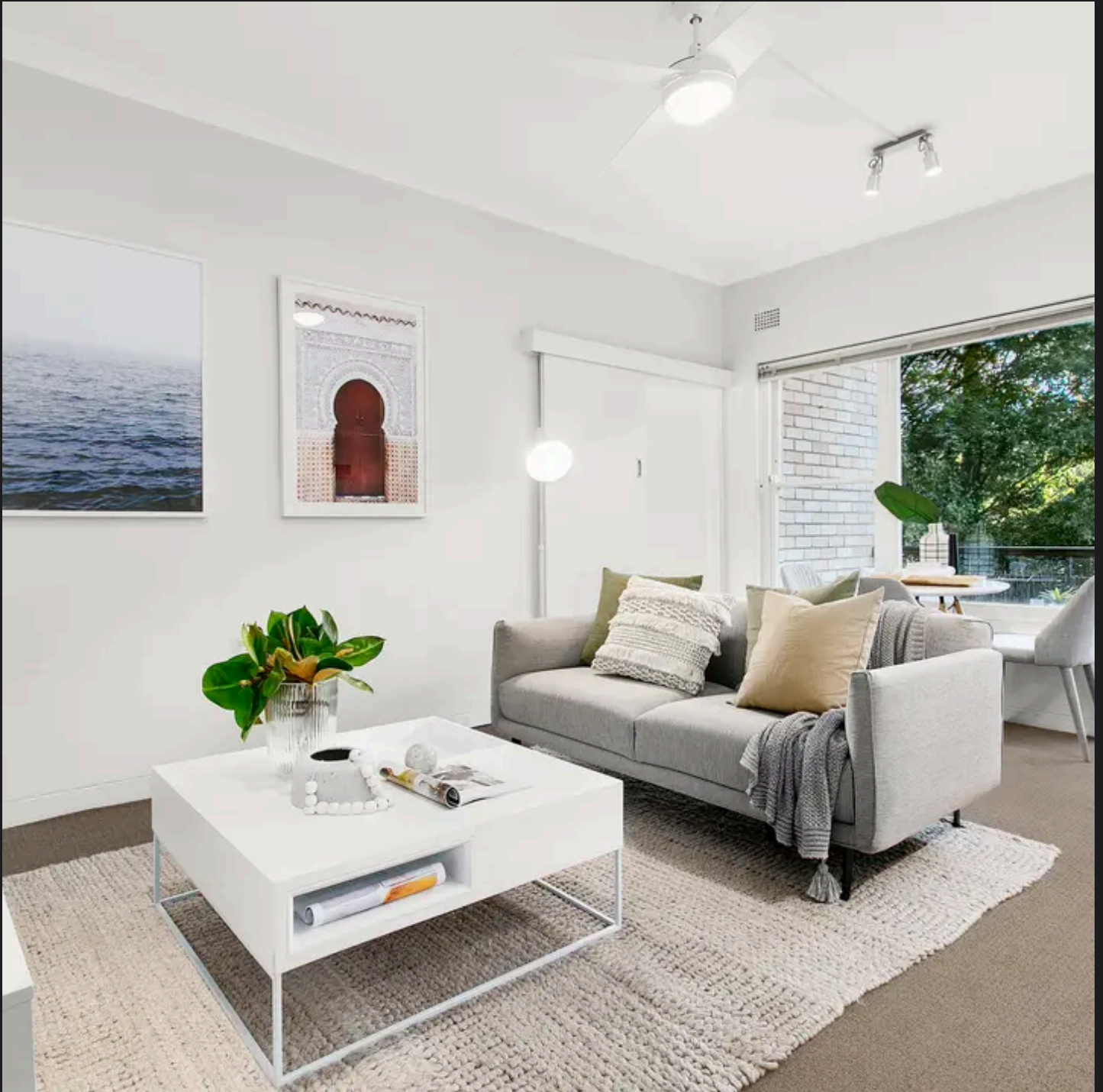


RayWhite®

TOUMA TAYLOR

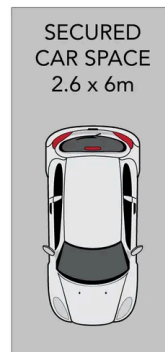
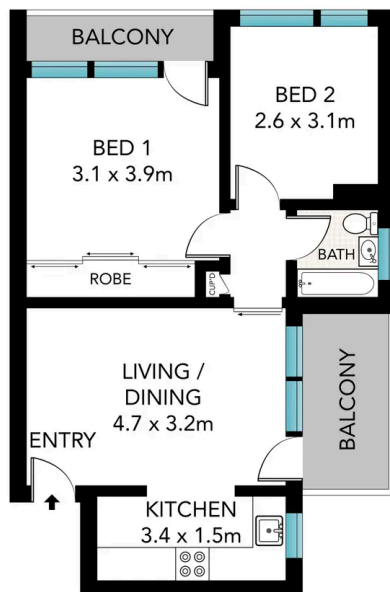


**Smart Lifestyle Apartment In The Heart Of
Randwick**

8/9-11 St Pauls Street, Randwick

2 bed 1 bath 1 car

Sold



Scale in metres. Indicative only. Dimensions are approximate. All information contained herein is gathered from sources we believe to be reliable. However, we cannot guarantee its accuracy and interested persons should rely on their own enquiries.

INT: 54 m²
EXT: 25 m²



Ray White

8/9-11 St Pauls Street, Randwick



Disclaimer: All information provided is sourced from what we believe to be reliable sources. However, we do not guarantee its accuracy, and interested parties should conduct their own enquiries. Scale in metres. Indicative only. Dimensions are approximate.