

# **RayWhite®**

TOUMA TAYLOR



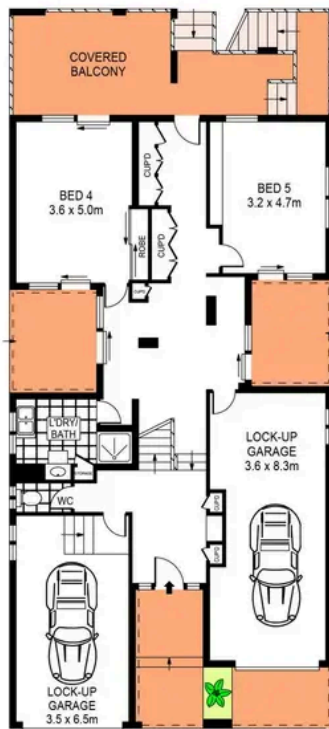
**Solid Double Brick Family Home Tightly-  
Held for 40 Years**

9 Barker Street, Kensington

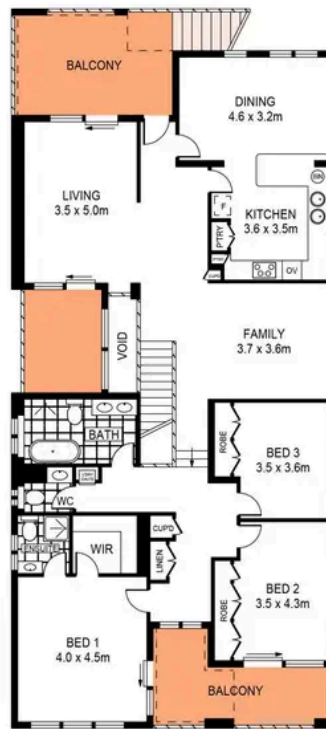
5 bed 3 bath 4 car

**Sold**





ENTRY LEVEL



LEVEL ONE



SITE PLAN  
(NOT TO SCALE)



SCALE (METRES)

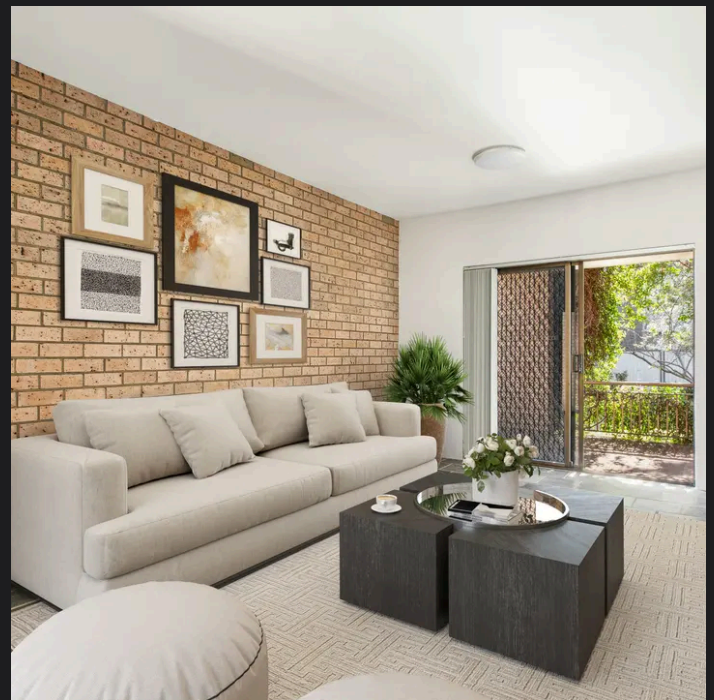
PLANS SHOWN ONLY INDICATIVE OF LAYOUT. DIMENSIONS ARE APPROXIMATE.  
Ref. No: 00283

APPROX. INTERNAL AREA : 302m<sup>2</sup>  
TOTAL LAND SIZE : 512m<sup>2</sup>



9 BARKER STREET

KENSINGTON



**Roger Wardy 0481 355 493**  
roger.wardy@raywhite.com

**Disclaimer:** All information provided is sourced from what we believe to be reliable sources. However, we do not guarantee its accuracy, and interested parties should conduct their own enquiries. Scale in metres. Indicative only. Dimensions are approximate.