

RayWhite[®]

TOUMA TAYLOR

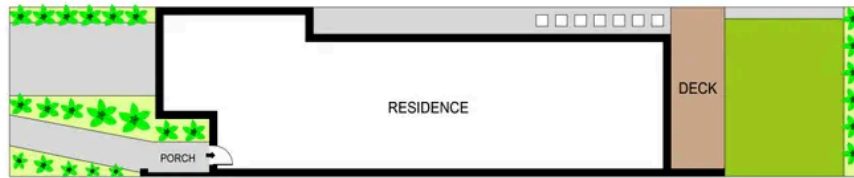


**Stylish Designer Living in a Premium
Address**

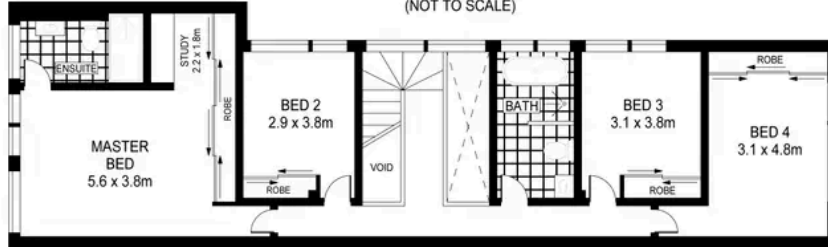
9 Middlemiss Street, Rosebery

5 bed 3 bath 2 car

Sold



SITE PLAN
(NOT TO SCALE)



FIRST FLOOR



GROUND FLOOR

0 1 2 3 4 5 **SCALE (METRES)**

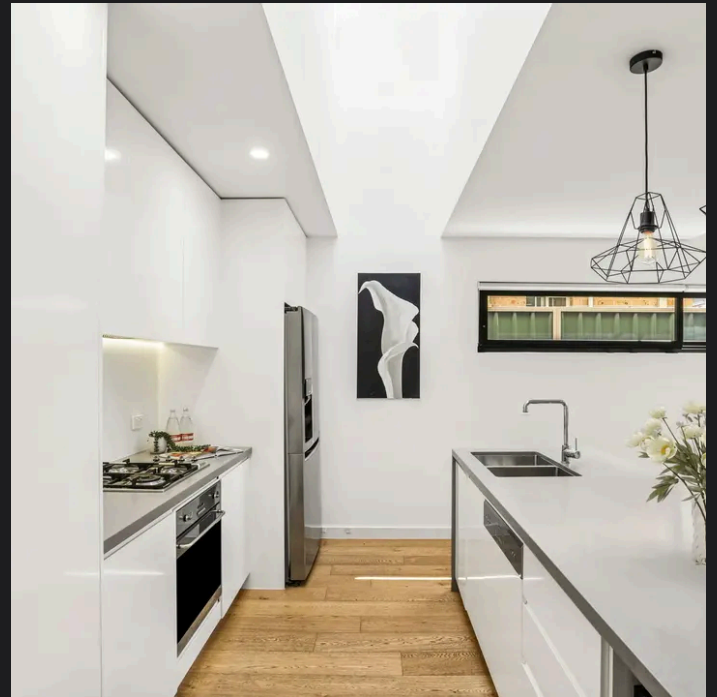
PLANS SHOWN ONLY INDICATIVE OF LAYOUT. DIMENSIONS ARE APPROXIMATE.
Ref. No: 04158

INTERNAL SIZE APPROX : 191m²



9 MIDDLEMISS STREET

ROSEBERY



Roger Wardy 0481 355 493
roger.wardy@raywhite.com

Ferhat Akin 0410 232 871
ferhat.akin@raywhite.com

Disclaimer: All information provided is sourced from what we believe to be reliable sources. However, we do not guarantee its accuracy, and interested parties should conduct their own enquiries. Scale in metres. Indicative only. Dimensions are approximate.