

RayWhite®

TOUMA TAYLOR



**Premier Dual-Level Family Home with
Separate Apartment in Prime Location**

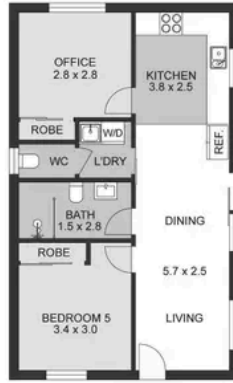
91 Tunstall Avenue, Kingsford

5 bed 3 bath 3 car

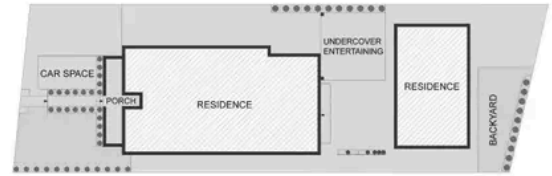
Sold



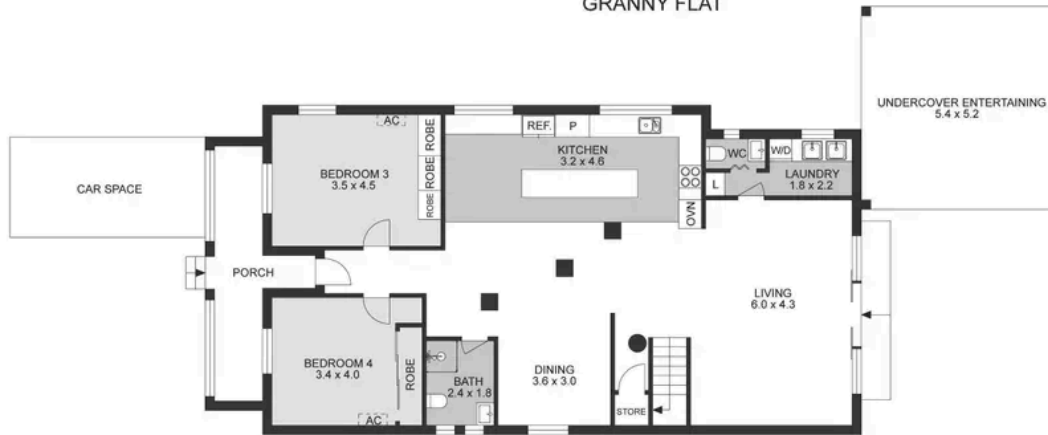
FIRST FLOOR



GRANNY FLAT



SITE PLAN



GROUND FLOOR

The site plan and floor plan are not to scale; measurements are indicative and in metres.
Bushes and trees are placed for illustration purposes. Plans should not be relied on.
Interested parties should make and rely on their own enquiries.



Roger Wardy 0481 355 493
roger.wardy@raywhite.com

Jesse Petersen 0404197940
jesse.petersen@raywhite.com