

# **RayWhite<sup>®</sup>**

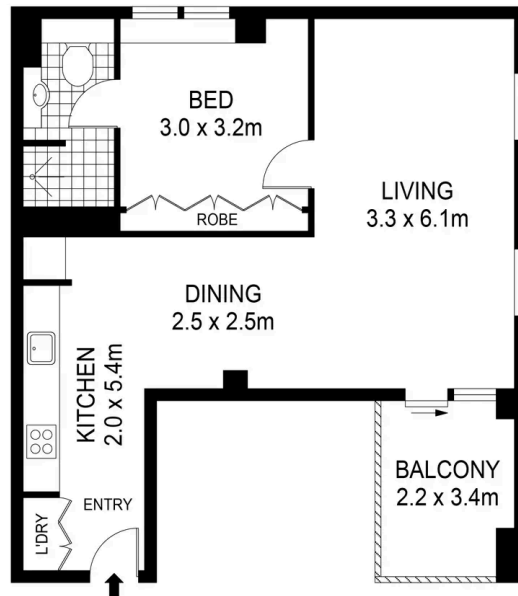
TOUMA TAYLOR



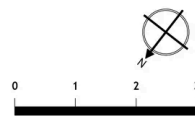
**Convenient Urban Living with Resort-Style  
Facilities**

9/10 Pyrmont Bridge Road, Camperdown

1 bed 1 bath



LEVEL ONE



Disclaimer: All information provided is sourced from what we believe to be reliable sources. However, we do not guarantee its accuracy, and interested parties should conduct their own enquiries. Scale in metres. Indicative only. Dimensions are approximate.



**Dalton Stewart 0458 668 119**  
dalton.stewart@raywhite.com

**Walter Burfitt-Williams 0402 833 566**  
walter.bw@raywhite.com