

# RayWhite®

TOUMA TAYLOR

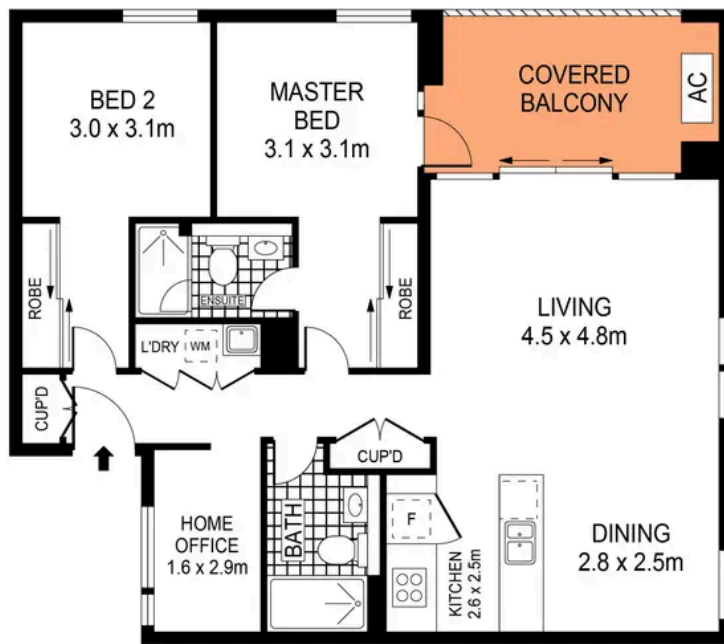


**Sun filled apartment set to the rear of 'The Asper'**

91/767 Botany Road, Rosebery

2 bed 2 bath 1 car

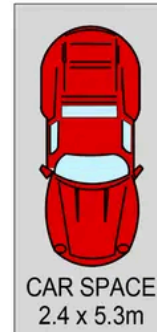
**Sold**



### LEVEL THREE



PLANS SHOWN ONLY INDICATIVE OF LAYOUT. DIMENSIONS ARE APPROXIMATE.  
Ref. No: 05497



STORAGE  
CAGE  
0.7 x 1.1m



91/767 BOTANY ROAD

ROSEBERY



**Max Klimenko 0425 336 555**  
max.klimenko@raywhite.com

**Dylan Corelli 0458 711 577**  
dylan.corelli@raywhite.com

**Disclaimer:** All information provided is sourced from what we believe to be reliable sources. However, we do not guarantee its accuracy, and interested parties should conduct their own enquiries. Scale in metres. Indicative only. Dimensions are approximate.