

RayWhite®

TOUMA TAYLOR

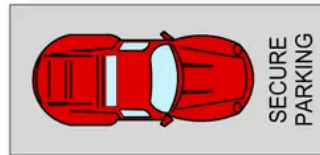


Fantastic Residence with Stylish Split-Level Design

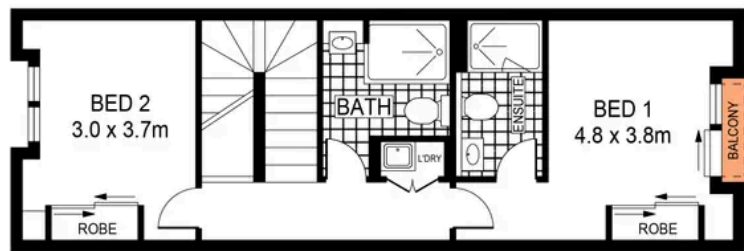
9/27 Rosebery Avenue, Rosebery

2 bed 2 bath 1 car

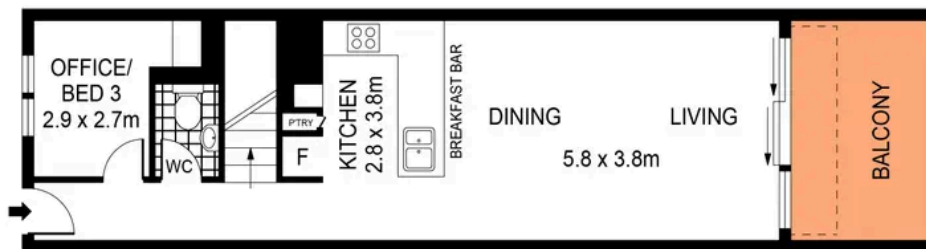
Sold



STORAGE
CAGE



LEVEL THREE



LEVEL TWO

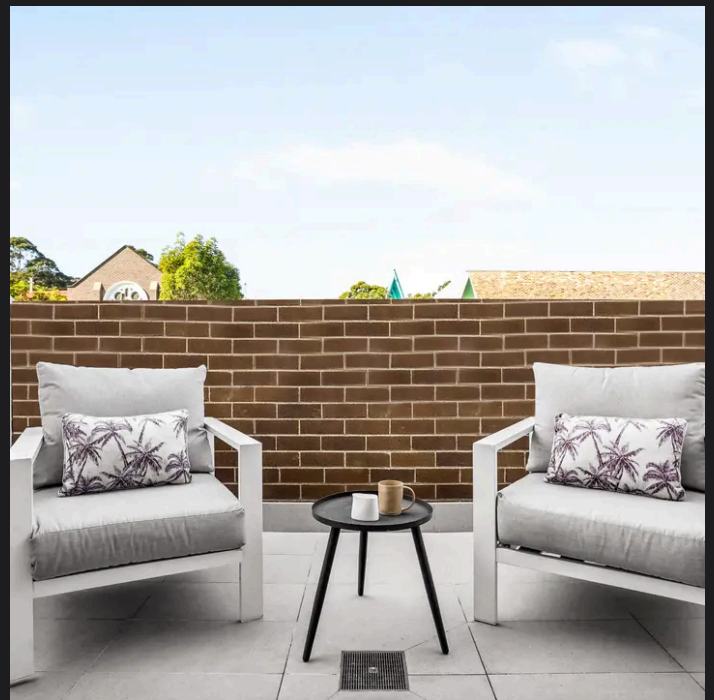
0 1 2 3 4 5 SCALE (METRES)

PLANS SHOWN ONLY INDICATIVE OF LAYOUT. DIMENSIONS ARE APPROXIMATE.
Ref. No: 109889



9/27 ROSEBERY AVENUE

ROSEBERY



Max Klimenko 0425 336 555
max.klimenko@raywhite.com

Disclaimer: All information provided is sourced from what we believe to be reliable sources. However, we do not guarantee its accuracy, and interested parties should conduct their own enquiries. Scale in metres. Indicative only. Dimensions are approximate.