

RayWhite®

TOUMA TAYLOR

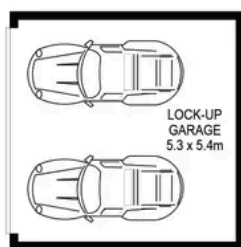


**Expansive Penthouse with 270-degree
Views and Two Sunlit Balconies**

9A/343 Anzac Parade, Kingsford

3 bed 2 bath 2 car

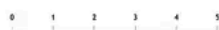
Sold



GROUND LEVEL



LEVEL NINE



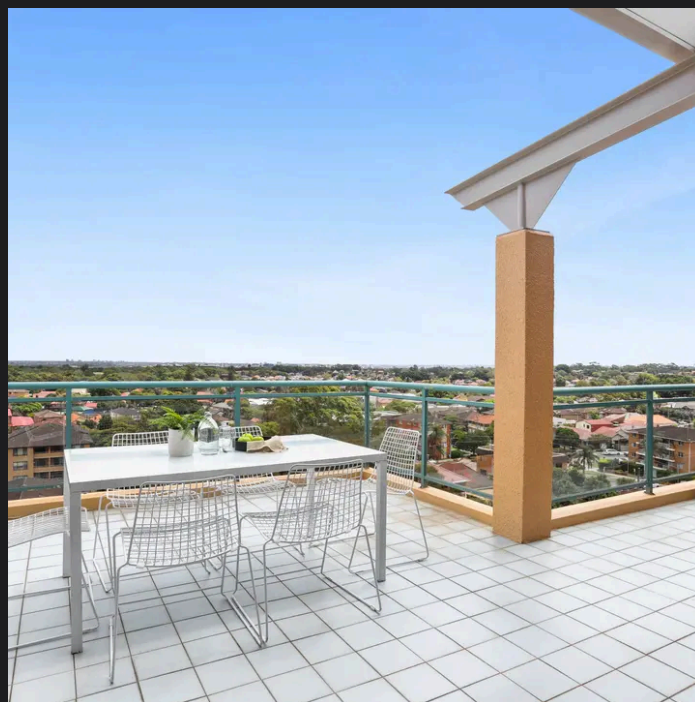
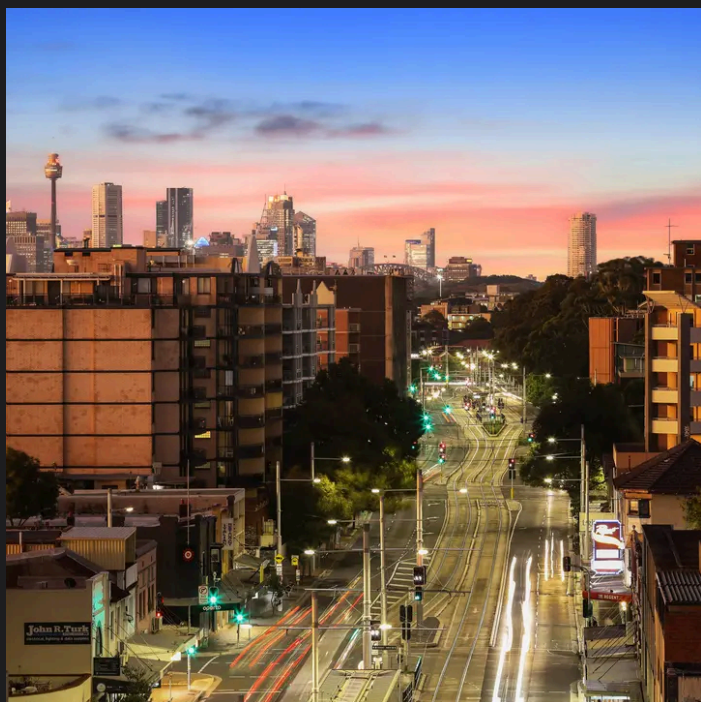
SCALE (METRES)

PLANS SHOWN ONLY INDICATIVE OF LAYOUT. DIMENSIONS ARE APPROXIMATE.
Ref. No: 101791



9A/343 ANZAC PARADE

KINGSFORD



Roger Wardy 0481 355 493
roger.wardy@raywhite.com

Disclaimer: All information provided is sourced from what we believe to be reliable sources. However, we do not guarantee its accuracy, and interested parties should conduct their own enquiries. Scale in metres. Indicative only. Dimensions are approximate.