

RayWhite®

TOUMA TAYLOR

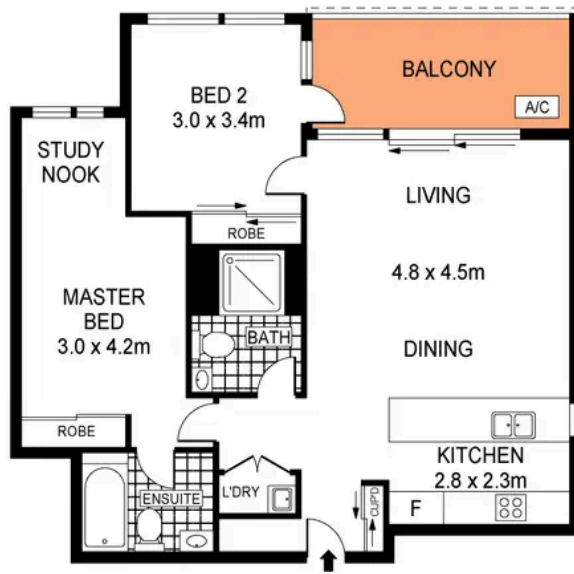


**Superb Entertainer with Ultra-Convenient
Address**

B303/101 Dalmeny Avenue, Rosebery

2 bed 2 bath 1 car

Sold



LEVEL THREE

BASEMENT



0 1 2 3 4 5 SCALE (METRES)

PLANS SHOWN ONLY INDICATIVE OF LAYOUT. DIMENSIONS ARE APPROXIMATE.
Ref. No: 92316



303/101 DALMENY AVENUE

ROSEBERY



Max Klimenko 0425 336 555
max.klimenko@raywhite.com

Disclaimer: All information provided is sourced from what we believe to be reliable sources. However, we do not guarantee its accuracy, and interested parties should conduct their own enquiries. Scale in metres. Indicative only. Dimensions are approximate.