

RayWhite®

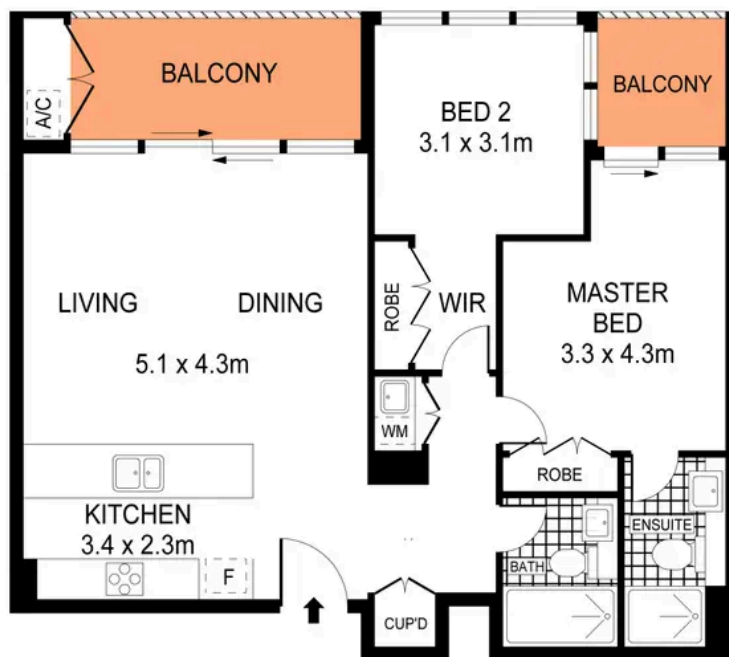
TOUMA TAYLOR



**Sophisticated Executive Living in 'The
Castlereagh'**

1001/209 Castlereagh St, Sydney

2 bed 2 bath



LEVEL TEN



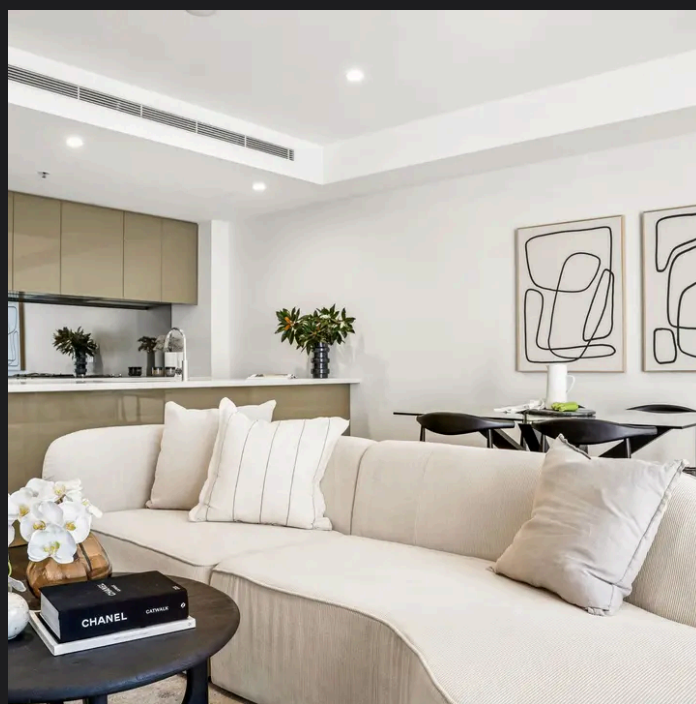
PLANS SHOWN ONLY INDICATIVE OF LAYOUT. DIMENSIONS ARE APPROXIMATE.
Ref. No. 04421

APPROX. INTERNAL AREA : 78m²
APPROX. EXTERNAL AREA : 12m²



1001/209 CASTLEREAGH STREET

SYDNEY



Sam Sabine 0407 770 924
sam.sabine@raywhite.com

Corey Rotunno-Grant 0450 388 059
corey.rg@raywhite.com

Disclaimer: All information provided is sourced from what we believe to be reliable sources. However, we do not guarantee its accuracy, and interested parties should conduct their own enquiries. Scale in metres. Indicative only. Dimensions are approximate.