

RayWhite®

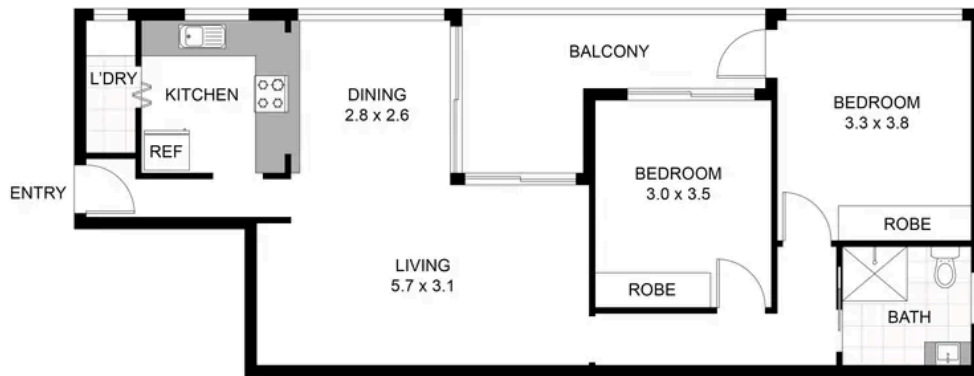
TOUMA TAYLOR



**Exquisite coastal unfurnished two
bedroom apartment with parking**

11/10-12 Fletcher Street, Bondi

2 bed 1 bath 1 car



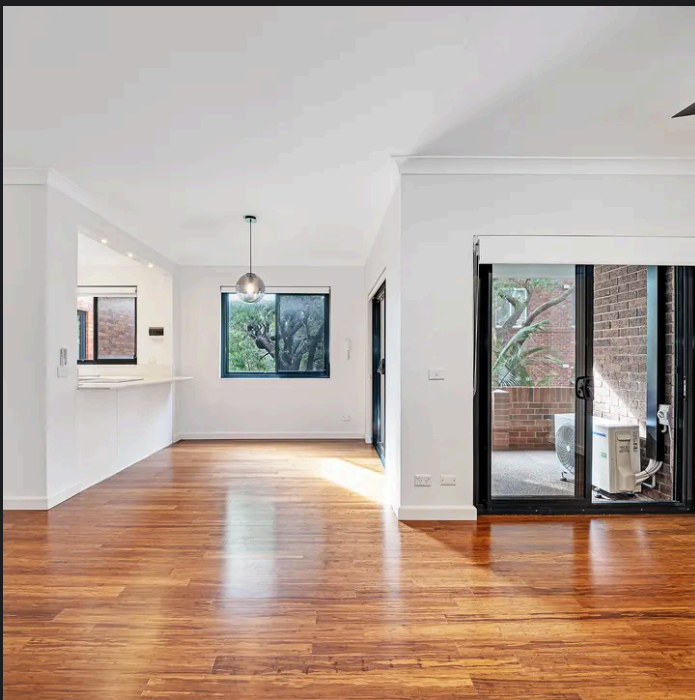
0 1 2 3 4 5

11/10-12 FLETCHER ST,
BONDI

RAY WHITE TAYLOR & PARTNERS

PLEASE NOTE: WHILST RAY WHITE TAKES EVERY CARE IN THE PURSUIT ACCURACY, THE PLAN IS SHOWN FOR GENERAL GUIDANCE ONLY. ALL AREAS, MEASUREMENTS AND DISTANCES ARE APPROXIMATE AND NOT SCALE. RAY WHITE AND OUR VENDOR WILL ACCEPT NO RESPONSIBILITY FOR ITS ACCURACY. INTERESTED PARTIES ARE ADVISED TO MAKE THEIR OWN INDEPENDENT ENQUIRIES.

2 Bedroom, 1 Bathroom, 1 Car



Heidi Gouverneur 0480 683 371
heidi.gouverneur@raywhite.com

Sam Sabine 0407 770 924
sam.sabine@raywhite.com

Disclaimer: All information provided is sourced from what we believe to be reliable sources. However, we do not guarantee its accuracy, and interested parties should conduct their own enquiries. Scale in metres. Indicative only. Dimensions are approximate.