

# **RayWhite®**

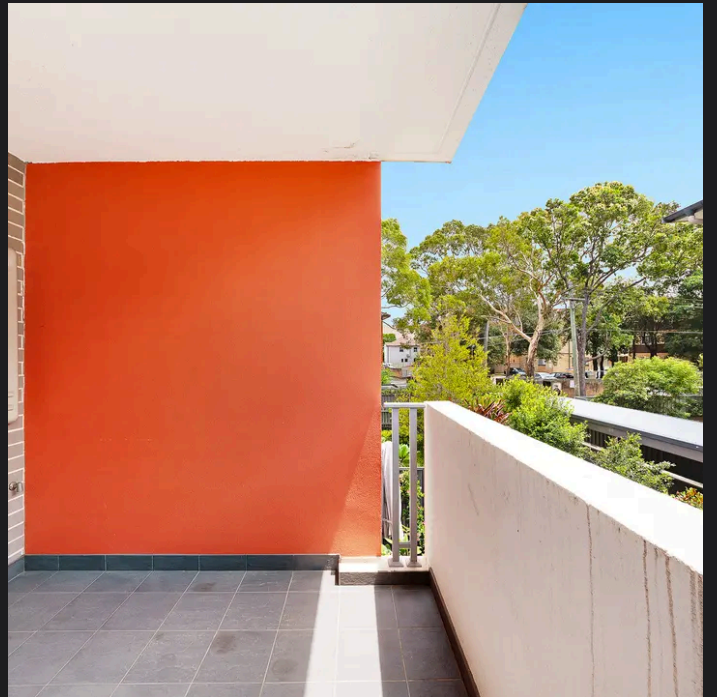
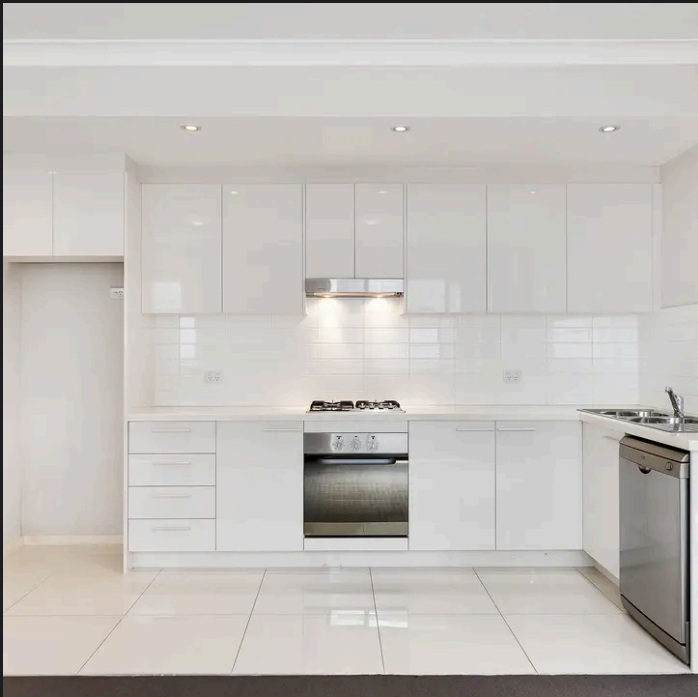
TOUMA TAYLOR



**Contemporary one bedroom apartment  
with secure parking + storage cage**

12/18-20 Terrace Road, Dulwich Hill

1 bed 1 bath 1 car



**Bianca Walton 0478 579 468**  
[bianca.walton@raywhite.com](mailto:bianca.walton@raywhite.com)

**Disclaimer:** All information provided is sourced from what we believe to be reliable sources. However, we do not guarantee its accuracy, and interested parties should conduct their own enquiries. Scale in metres. Indicative only. Dimensions are approximate.