

RayWhite[®]

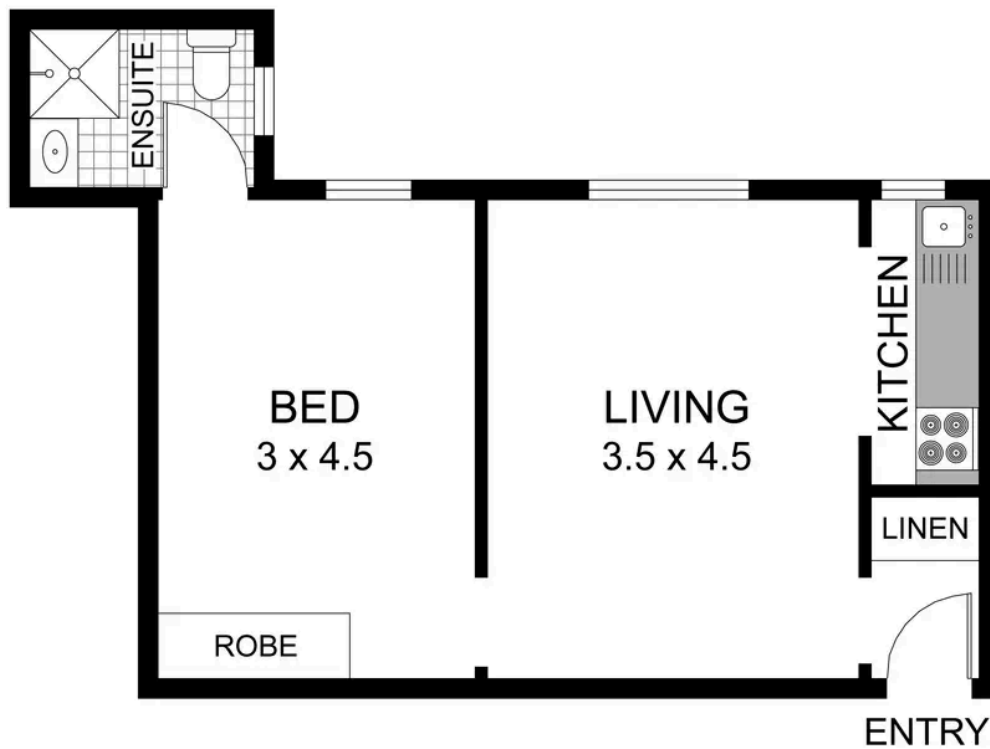
TOUMA TAYLOR



HOLDING DEPOSIT RECEIVED

19/199A Victoria Street, Potts Point

1 bed 1 bath

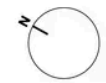


0 1 2 3 4

19/199A VICTORIA STREET
POTTS POINT

RAY WHITE TAYLOR & PARTNERS

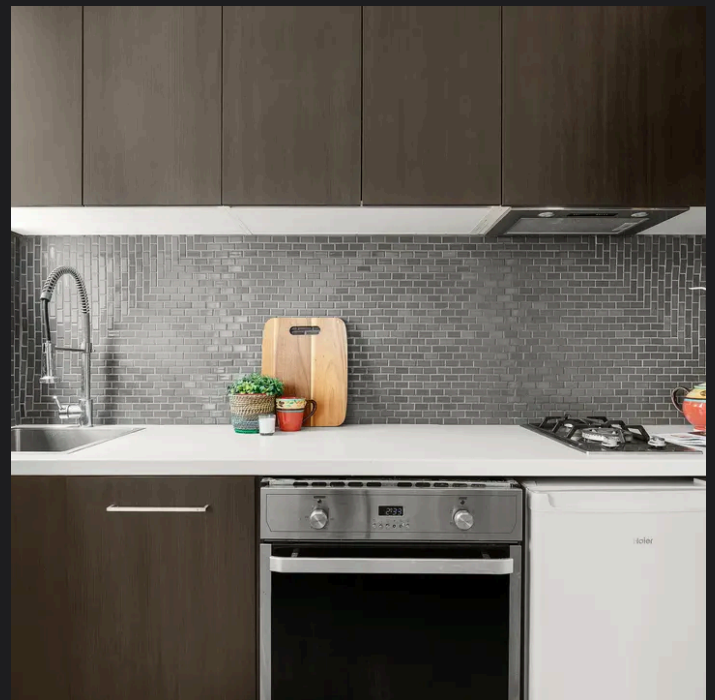
1 Bedroom, 1 Bathroom



PLEASE NOTE: WHILST RAY WHITE TAKES EVERY CARE IN THE PURSUIT OF ACCURACY, THE PLAN IS SHOWN FOR GENERAL GUIDANCE ONLY. ALL AREAS, MEASUREMENTS AND DISTANCES ARE APPROXIMATE AND NOT TO SCALE. RAY WHITE AND OUR VENDOR WILL ACCEPT NO RESPONSIBILITY FOR ITS ACCURACY. INTERESTED PARTIES ARE ADVISED TO MAKE THEIR OWN INDEPENDENT ENQUIRIES.



Anastasia Dean (02) 9043 8777
anastasia.dean@raywhite.com



Peter Taylor 0402 273 649
peter.taylor@raywhite.com

Disclaimer: All information provided is sourced from what we believe to be reliable sources. However, we do not guarantee its accuracy, and interested parties should conduct their own enquiries. Scale in metres. Indicative only. Dimensions are approximate.