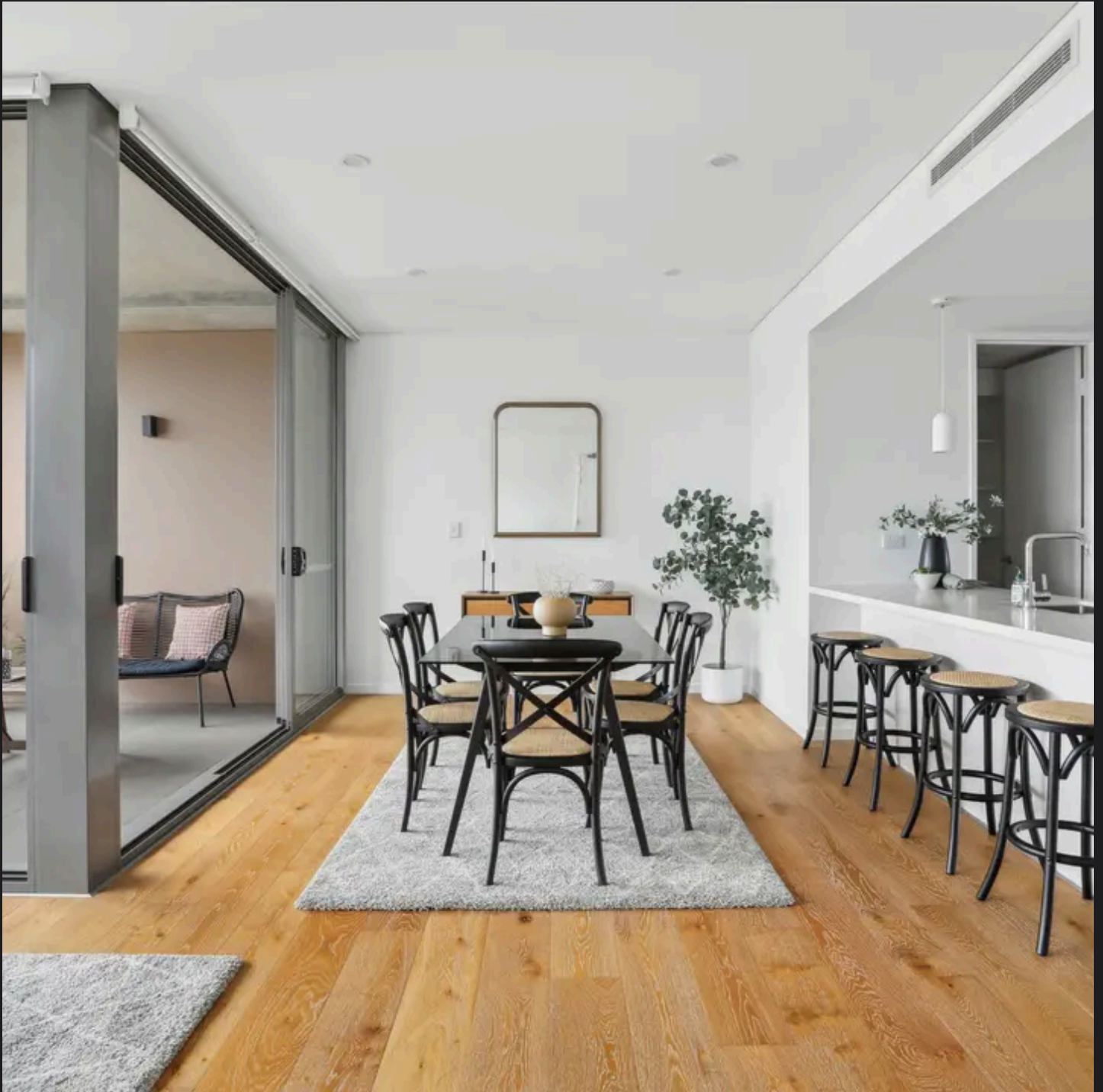


RayWhite®

TOUMA TAYLOR

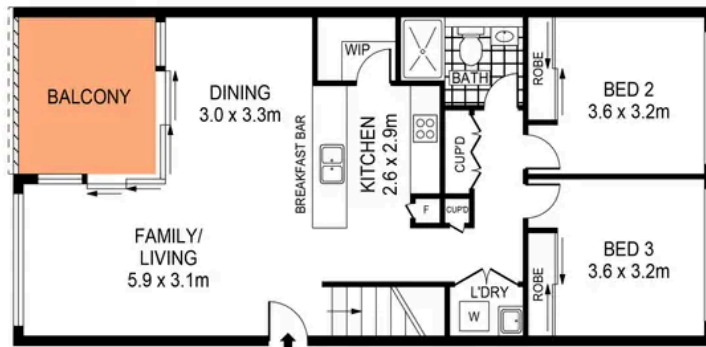


**Unfurnished three bedroom apartment
within ultra modern complex of 26
apartments**

208/29 Dunning Avenue, Rosebery

3 bed 2 bath 2 car

STORAGE
CAGE



ENTRY FLOOR
(LEVEL TWO)



FIRST FLOOR



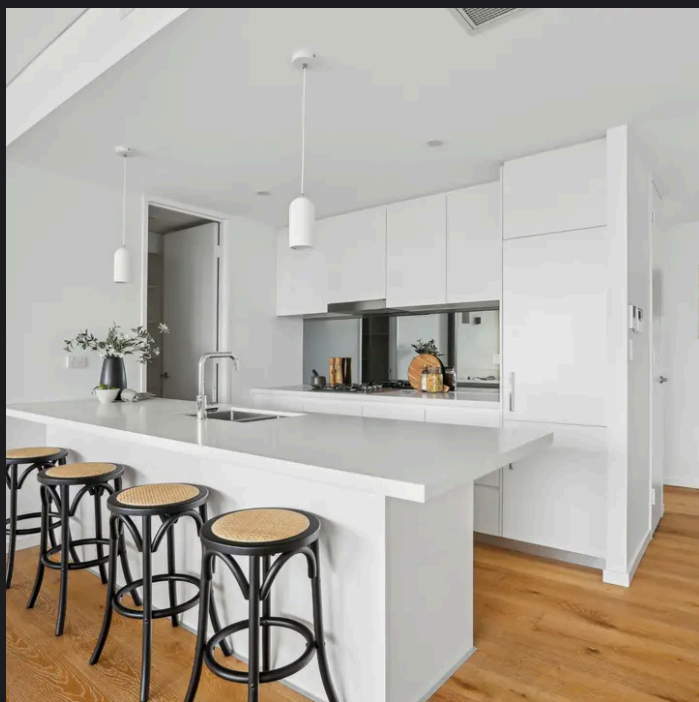
SCALE (METRES)

PLANS SHOWN ONLY INDICATIVE OF LAYOUT. DIMENSIONS ARE APPROXIMATE.
Ref. No: 03705



208/29 DUNNING AVENUE

ROSEBERY



Bianca Walton (02) 9043 8777
bianca.walton@raywhite.com

Disclaimer: All information provided is sourced from what we believe to be reliable sources. However, we do not guarantee its accuracy, and interested parties should conduct their own enquiries. Scale in metres. Indicative only. Dimensions are approximate.