

RayWhite®

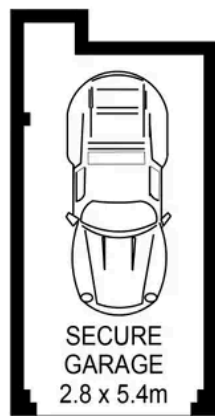
TOUMA TAYLOR



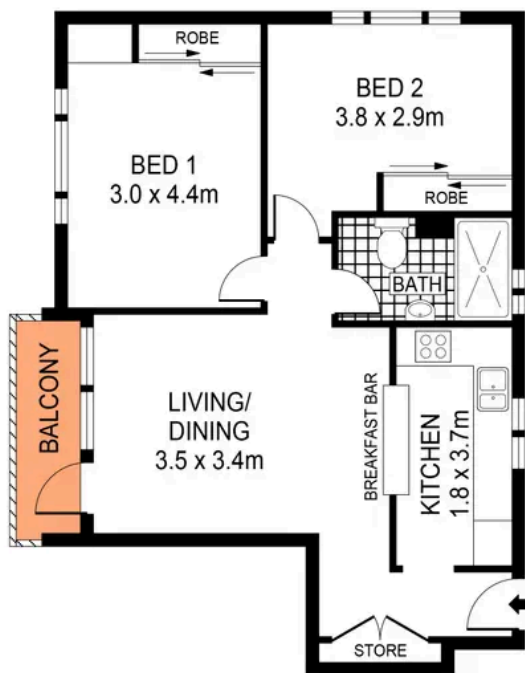
**North-Facing Apartment in Immaculate
Condition**

22/76 Lenthall Street, Kensington

2 bed 1 bath 1 car



GROUND LEVEL



LEVEL THREE

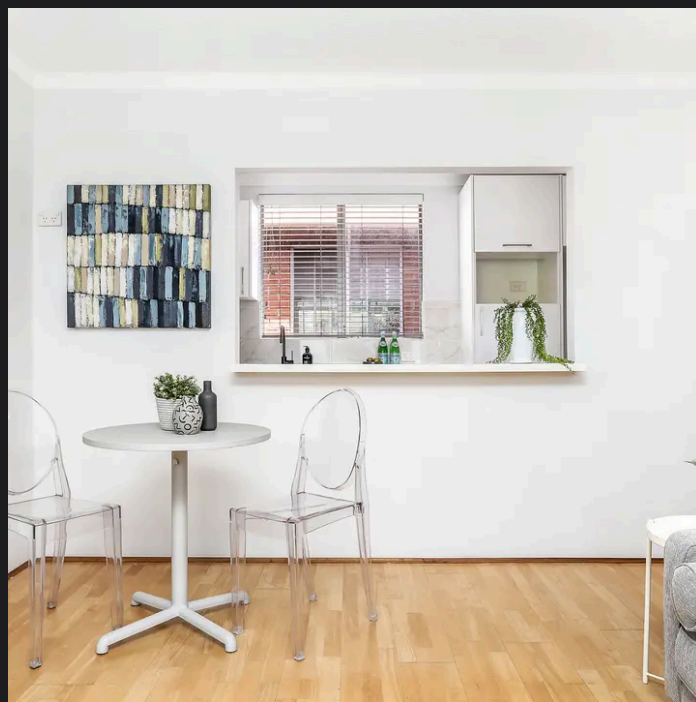
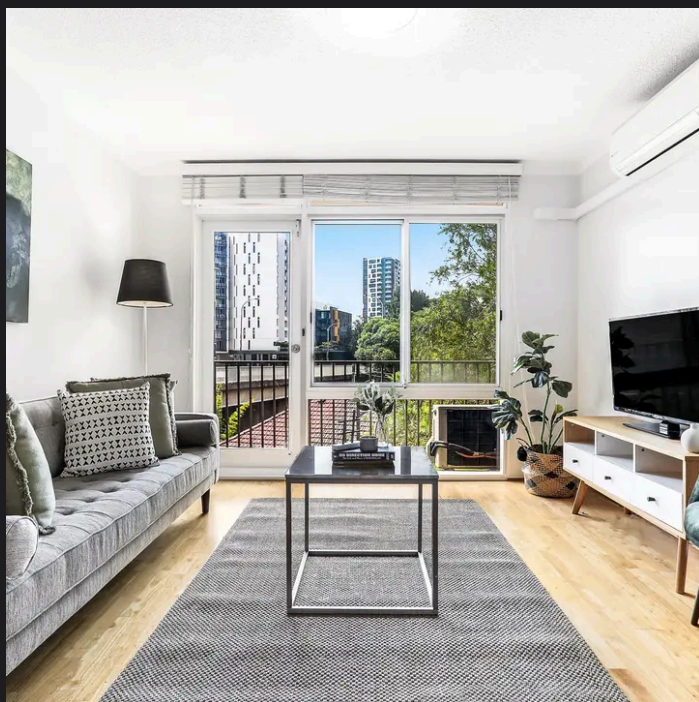


PLANS SHOWN ONLY INDICATIVE OF LAYOUT. DIMENSIONS ARE APPROXIMATE.
Ref. No: 86945



22/76 LENTHALL STREET

KENSINGTON



Sam Sabine 0480506897
sam.sabine@raywhite.com

Disclaimer: All information provided is sourced from what we believe to be reliable sources. However, we do not guarantee its accuracy, and interested parties should conduct their own enquiries. Scale in metres. Indicative only. Dimensions are approximate.