

# RayWhite®

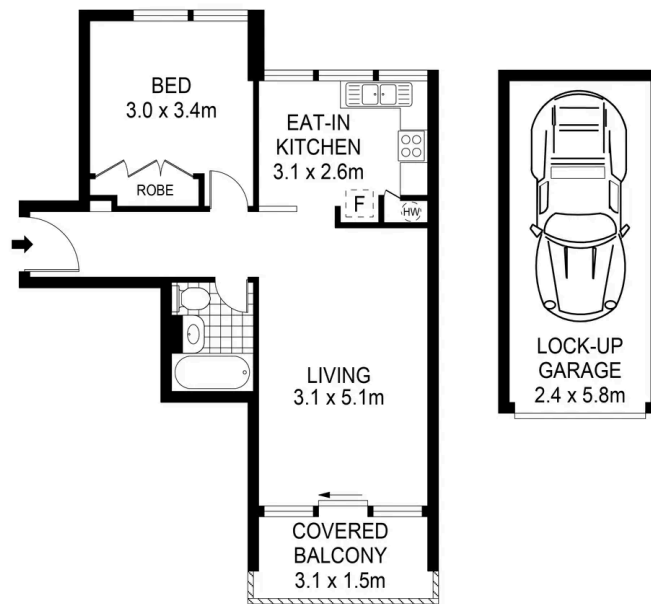
TOUMA TAYLOR



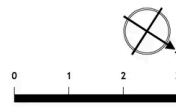
**Lifestyle sanctuary in landmark 'Bayview'  
building**

30/41-49 Roslyn Gardens, Elizabeth Bay

1 bed 1 bath 1 car



LEVEL FOUR



Disclaimer: All information provided is sourced from what we believe to be reliable sources. However, we do not guarantee its accuracy, and interested parties should conduct their own enquiries. Scale in metres. Indicative only. Dimensions are approximate.



**Heidi Gouverneur 0480 683 371**  
[heidi.gouverneur@raywhite.com](mailto:heidi.gouverneur@raywhite.com)

**Corey Rotunno-Grant 0450 388 059**  
[corey.rg@raywhite.com](mailto:corey.rg@raywhite.com)