

# RayWhite®

TOUMA TAYLOR



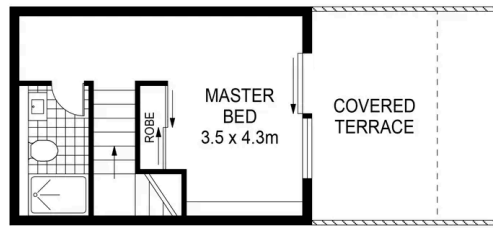
**Sleek Warehouse Conversion in Former  
'Swarovski' Headquarters**

408/12 Primrose Avenue, Rosebery

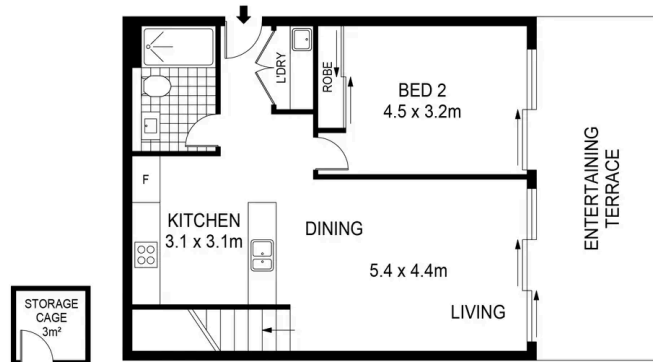
2 bed 2 bath



TOUMA TAYLOR



UPPER LEVEL



GROUND LEVEL



Disclaimer: All information provided is sourced from what we believe to be reliable sources. However, we do not guarantee its accuracy, and interested parties should conduct their own enquiries. Scale in metres. Indicative only. Dimensions are approximate.



**Sam Sabine 0480506897**  
sam.sabine@raywhite.com

**Disclaimer:** All information provided is sourced from what we believe to be reliable sources. However, we do not guarantee its accuracy, and interested parties should conduct their own enquiries. Scale in metres. Indicative only. Dimensions are approximate.