

RayWhite[®]

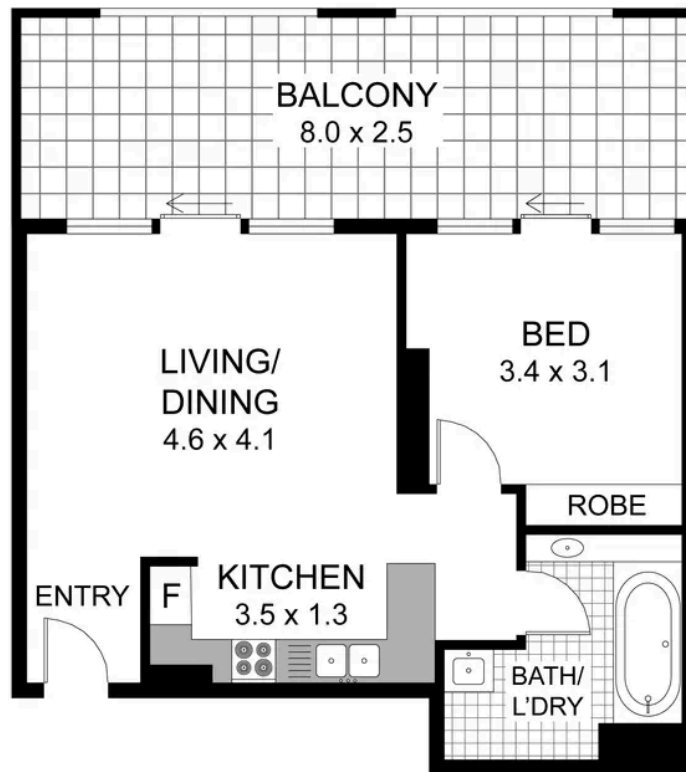
TOUMA TAYLOR



**Unfurnished one bedroom with full width
terrace**

411/242 Elizabeth Street, Surry Hills

1 bed 1 bath



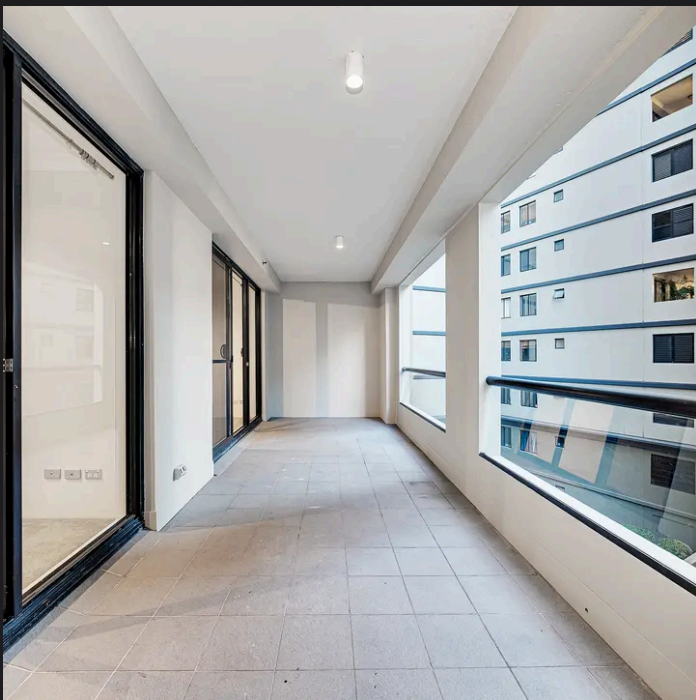
411/242 ELIZABETH STREET
SURRY HILLS
RAY WHITE TAYLOR & PARTNERS

1 Bedroom, 1 Bathroom

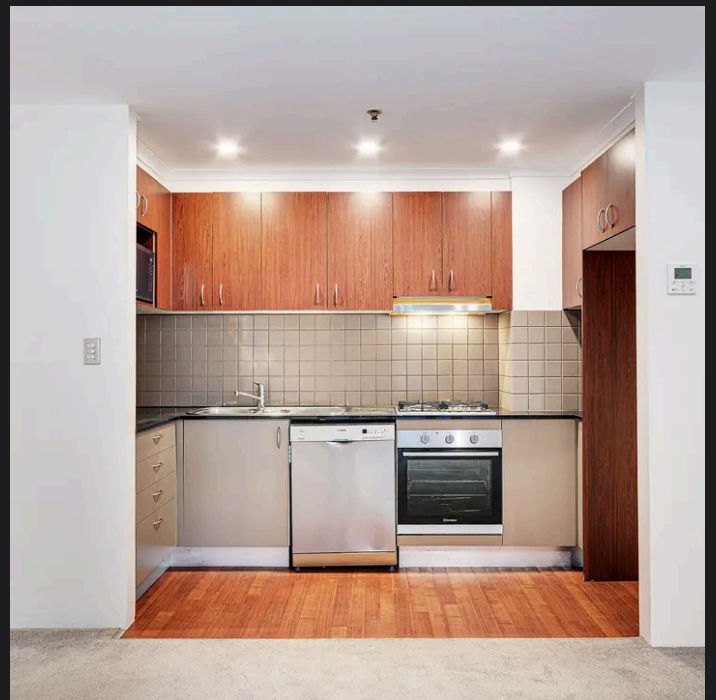
Internal area (approx.) 52sqm
Total area (approx.) 72sqm



PLEASE NOTE: WHILST RAY WHITE TAKES EVERY CARE IN THE PURSUIT OF ACCURACY, THE PLAN IS SHOWN FOR GENERAL GUIDANCE ONLY. ALL AREAS, MEASUREMENTS AND DISTANCES ARE APPROXIMATE AND NOT TO SCALE. RAY WHITE AND OUR VENDOR WILL ACCEPT NO RESPONSIBILITY FOR ITS ACCURACY. INTERESTED PARTIES ARE ADVISED TO MAKE THEIR OWN INDEPENDENT ENQUIRIES



Peter Taylor 0402 273 649
peter.taylor@raywhite.com



Bianca Walton 0478 579 468
bianca.walton@raywhite.com

Disclaimer: All information provided is sourced from what we believe to be reliable sources. However, we do not guarantee its accuracy, and interested parties should conduct their own enquiries. Scale in metres. Indicative only. Dimensions are approximate.