

RayWhite®

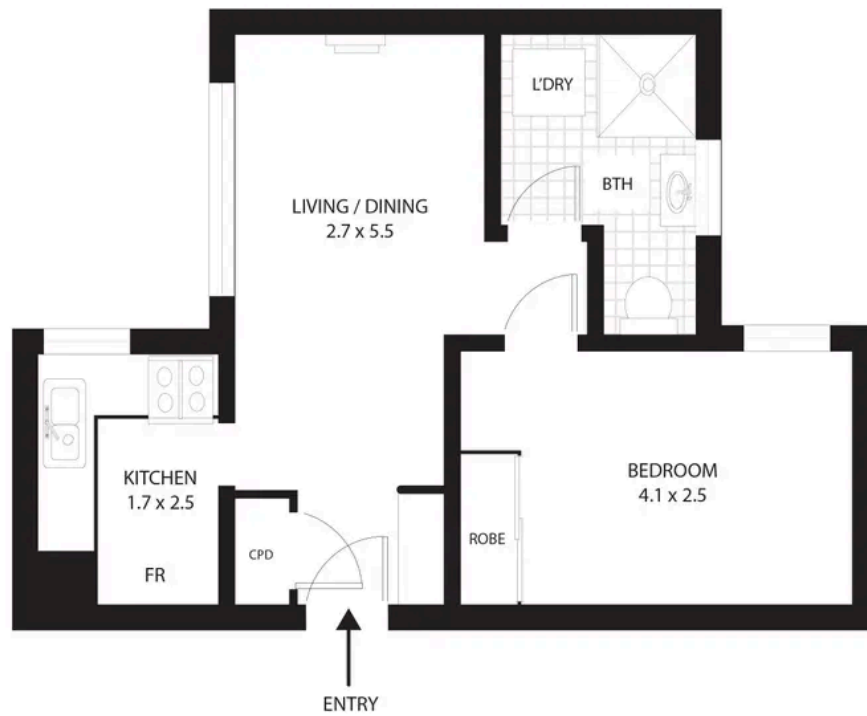
TOUMA TAYLOR



**Quiet Apartment In Boutique Art Deco
Building**

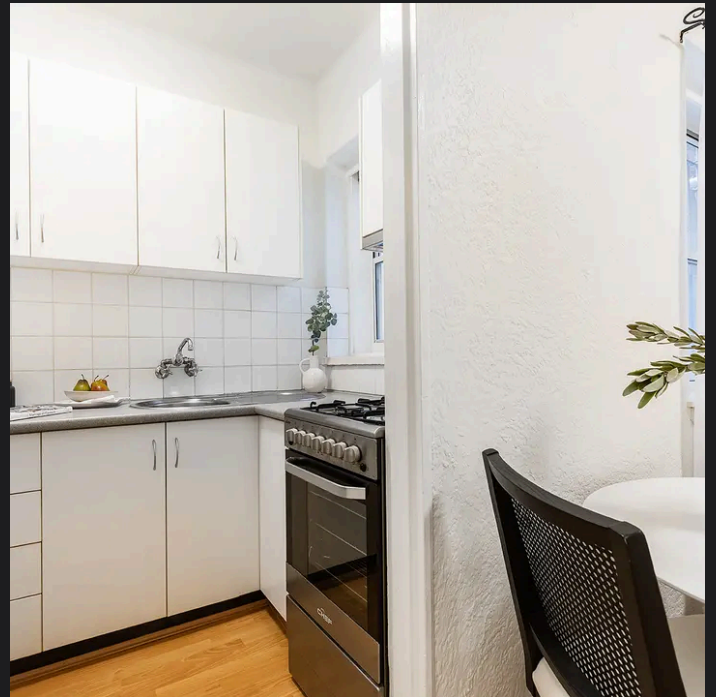
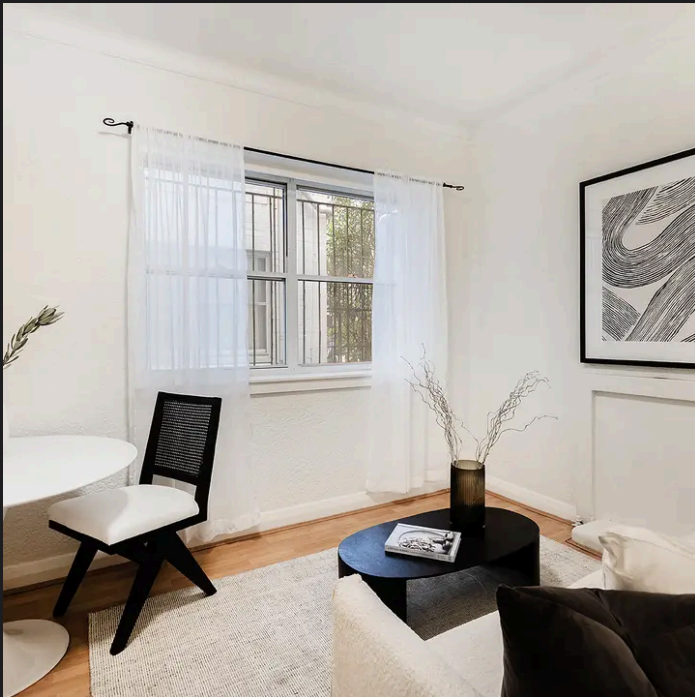
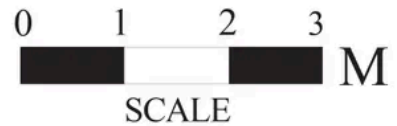
5/3 Ward Avenue, Potts Point

1 bed 1 bath



5/3 Ward Avenue, Potts Point

Whilst Ray White takes every care in the pursuit of accuracy, the plan is shown for general guidance only.
All areas, measurements and distances are approximate and not to scale.
Ray White and our vendor will accept no responsibility for its accuracy. Interested parties are advised to make their own enquiries.



Disclaimer: All information provided is sourced from what we believe to be reliable sources. However, we do not guarantee its accuracy, and interested parties should conduct their own enquiries. Scale in metres. Indicative only. Dimensions are approximate.