

# **RayWhite®**

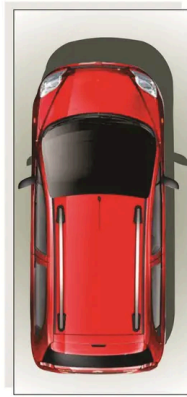
TOUMA TAYLOR



**Modern Studio Apartment with Undercover  
Parking**

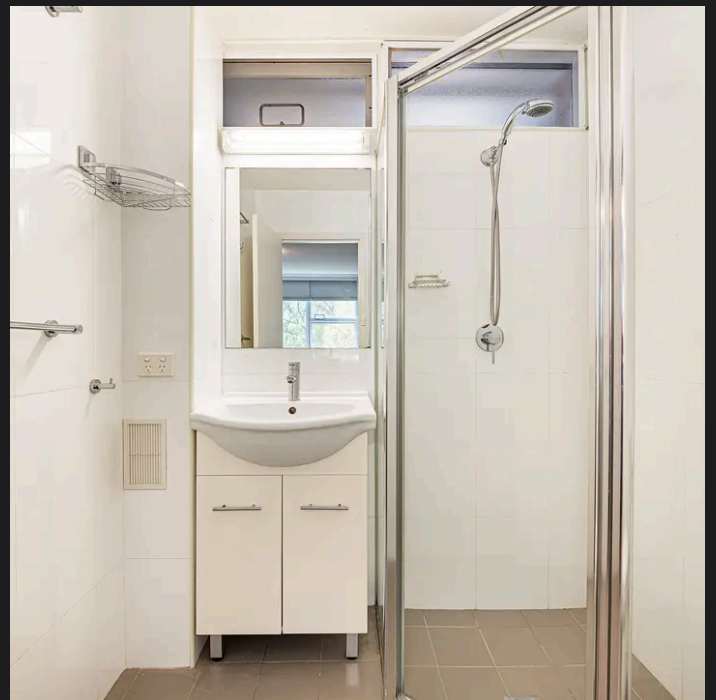
55/1 McDonald Street, Potts Point

1 bath 1 car



**FLOOR PLAN**  
**55/1 McDonald Street**  
**POTTS POINT**

"The information contained herein has been provided by our Principal and third parties, which we merely pass on without any representation or warranty given, intended or implied by us as to its correctness and with no liability accepted by us in this regard. You must rely on your own inquiries as to its accuracy or otherwise."



**Heidi Gouverneur 0480 683 371**  
heidi.gouverneur@raywhite.com

**Sam Sabine 0407 770 924**  
sam.sabine@raywhite.com