

RayWhite®

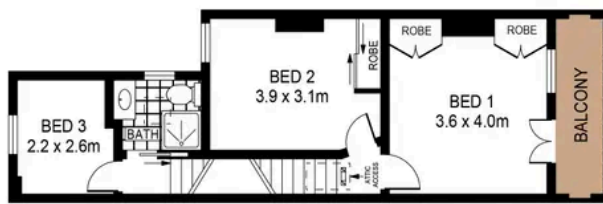
TOUMA TAYLOR



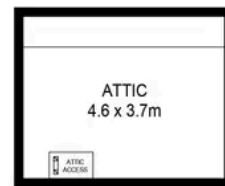
**Charming Urban Terrace in Tree-Lined
Street With Parking**

58 Nickson Street, Surry Hills

3 bed 1 bath 1 car



FIRST FLOOR



GROUND FLOOR



PLANS SHOWN ONLY INDICATIVE OF LAYOUT. DIMENSIONS ARE APPROXIMATE.
Ref. No: 03540



58 NICKSON STREET

SURRY HILLS



Bianca Walton (02) 9043 8777
bianca.walton@raywhite.com

Peter Taylor 0402 273 649
peter.taylor@raywhite.com

Disclaimer: All information provided is sourced from what we believe to be reliable sources. However, we do not guarantee its accuracy, and interested parties should conduct their own enquiries. Scale in metres. Indicative only. Dimensions are approximate.