

RayWhite[®]

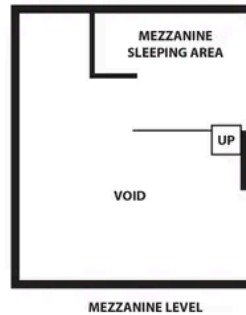
TOUMA TAYLOR



Spacious Loft Style Studio Apartment

6/128 Victoria Street, Potts Point

1 bed 1 bath

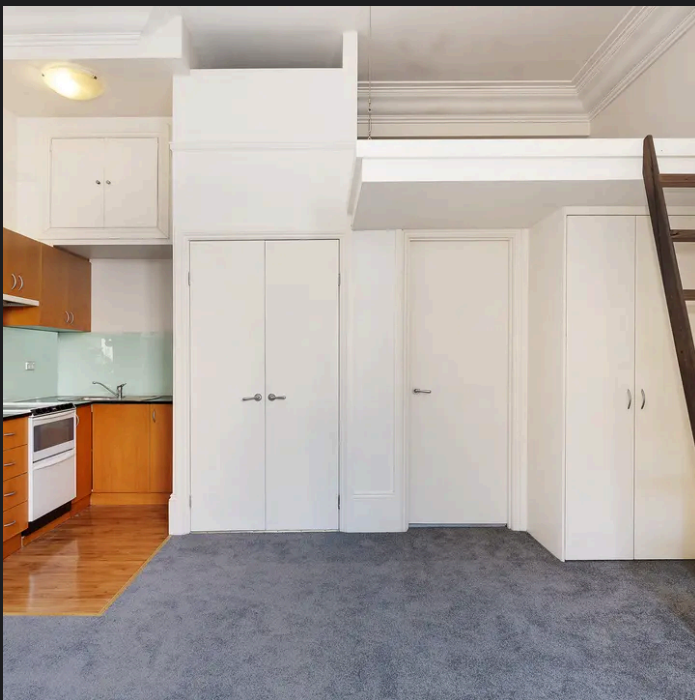


6 128 Victoria Street Potts Point

RAY WHITE TAYLOR & PARTNERS

Plans shown are for presentation purposes and are not part of any legal document or title and are subject to errors, omissions, inaccuracies and should not be used as a sole and accurate reference. Particulars given are for general information only and do not constitute any representation on the part of the vendor or agent. No liability will be accepted.

1 Bedroom, 1 Bathroom



Anastasia Dean (02) 9043 8777
 anastasia.dean@raywhite.com

Disclaimer: All information provided is sourced from what we believe to be reliable sources. However, we do not guarantee its accuracy, and interested parties should conduct their own enquiries. Scale in metres. Indicative only. Dimensions are approximate.