

# **RayWhite**<sup>®</sup>

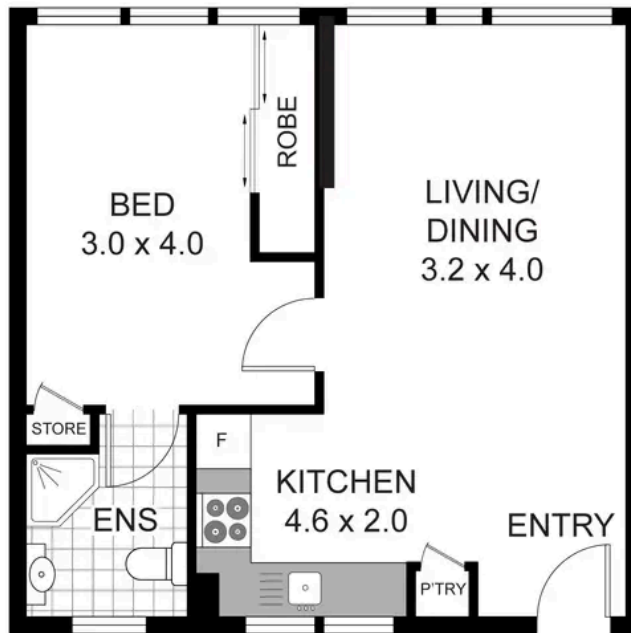
TOUMA TAYLOR



**Light-Filled and Versatile in the Heart of  
Neutral Bay**

6/185A Falcon Street, Neutral Bay

1 bed 1 bath



FIRST LEVEL

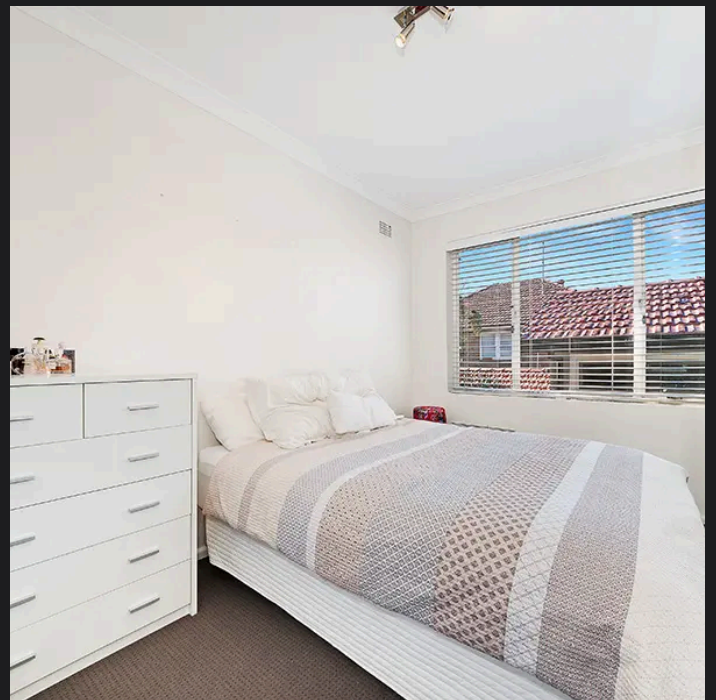
0 1 2 3 4

6/185A FALCON STREET  
NEUTRAL BAY  
**RAY WHITE TAYLOR & PARTNERS**

1 Bedroom, 1 Bathroom



PLEASE NOTE: WHILST RAY WHITE TAKES EVERY CARE IN THE PURSUIT OF ACCURACY, THE PLAN IS SHOWN FOR GENERAL GUIDANCE ONLY. ALL AREAS, MEASUREMENTS AND DISTANCES ARE APPROXIMATE AND NOT TO SCALE. RAY WHITE AND OUR VENDOR WILL ACCEPT NO RESPONSIBILITY FOR ITS ACCURACY. INTERESTED PARTIES ARE ADVISED TO MAKE THEIR OWN INDEPENDENT ENQUIRIES.



**Bianca Walton 0478 579 468**  
bianca.walton@raywhite.com

**Disclaimer:** All information provided is sourced from what we believe to be reliable sources. However, we do not guarantee its accuracy, and interested parties should conduct their own enquiries. Scale in metres. Indicative only. Dimensions are approximate.