

# RayWhite®

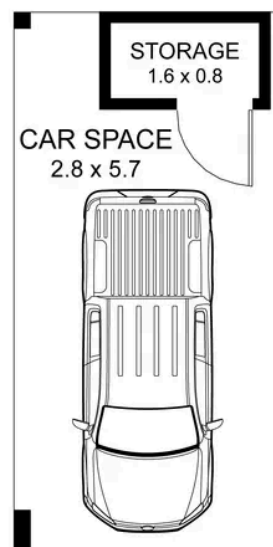
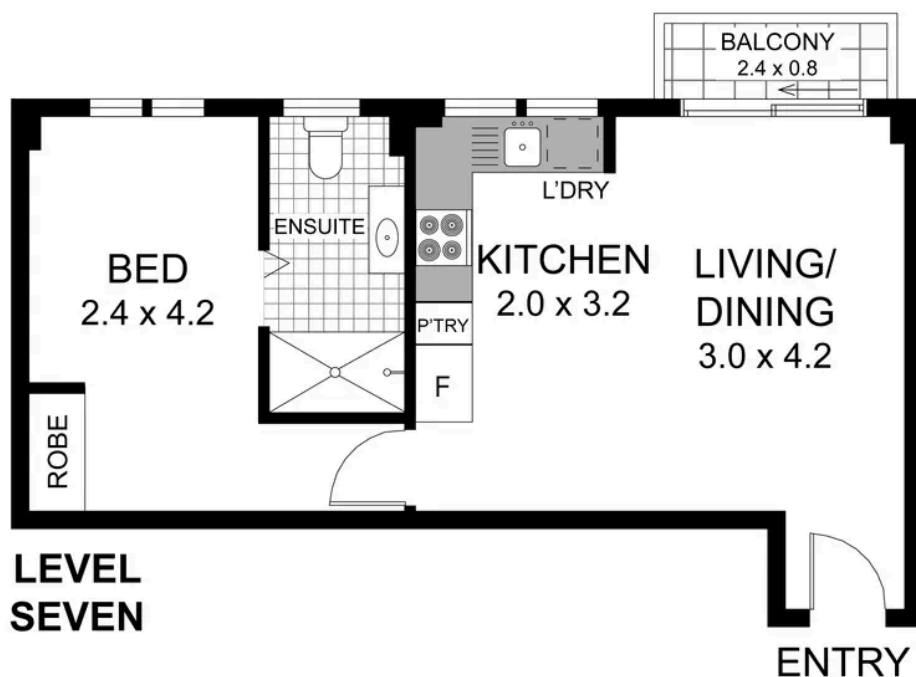
TOUMA TAYLOR



**Renovated Apartment with Stunning  
District Views**

71/679 Bourke Street, Surry Hills

1 bed 1 bath 1 car



0 1 2 3 4

71/679 BOURKE STREET  
SURRY HILLS

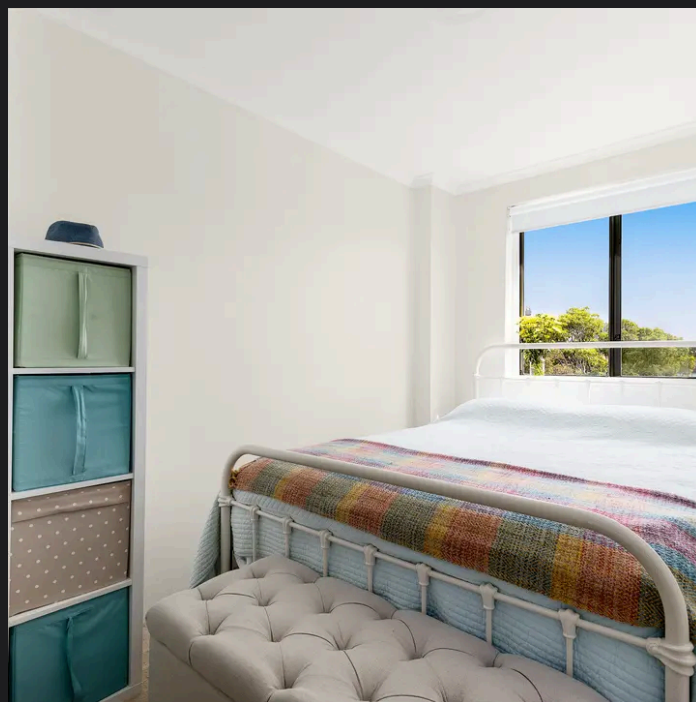
**RAY WHITE TAYLOR & PARTNERS**

**1 Bedroom, 1 Bathroom, 1 Car**

Apartment area (approx.) 44sqm  
Carspace (approx.) 16sqm  
Total area (approx.) 60sqm



PLEASE NOTE: WHILST RAY WHITE TAKES EVERY CARE IN THE PURSUIT OF ACCURACY, THE PLAN IS SHOWN FOR GENERAL GUIDANCE ONLY. ALL AREAS, MEASUREMENTS AND DISTANCES ARE APPROXIMATE AND NOT TO SCALE. RAY WHITE AND OUR VENDOR WILL ACCEPT NO RESPONSIBILITY FOR ITS ACCURACY. INTERESTED PARTIES ARE ADVISED TO MAKE THEIR OWN INDEPENDENT ENQUIRIES



**Bianca Walton 0478 579 468**  
bianca.walton@raywhite.com

**Sam Sabine 0407 770 924**  
sam.sabine@raywhite.com

**Disclaimer:** All information provided is sourced from what we believe to be reliable sources. However, we do not guarantee its accuracy, and interested parties should conduct their own enquiries. Scale in metres. Indicative only. Dimensions are approximate.